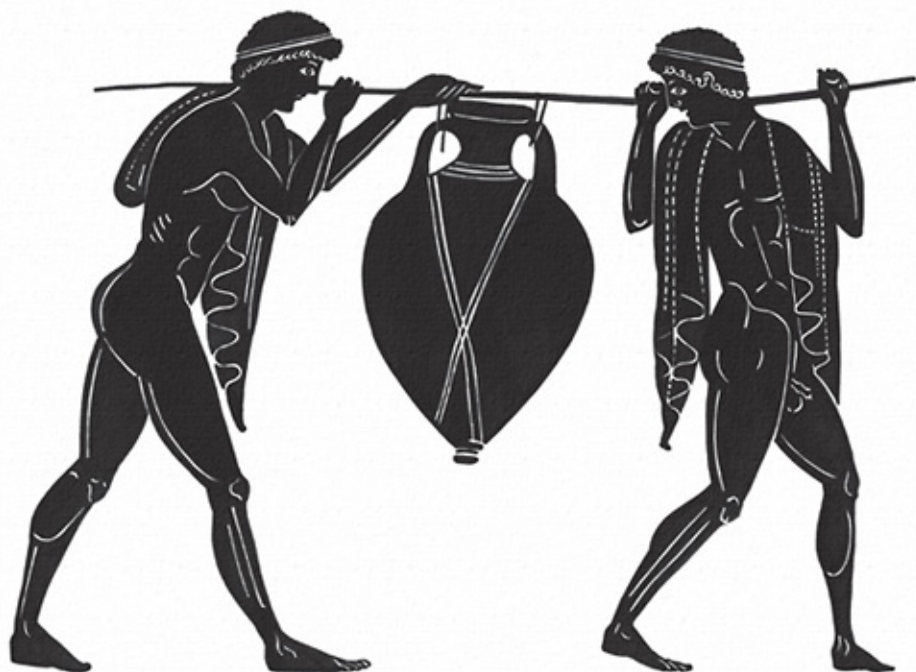




BULGARIAN ACADEMY OF SCIENCES  
NATIONAL ARCHAEOLOGICAL  
INSTITUTE WITH MUSEUM



ST. KLIMENT OHRIDSKI UNIVERSITY OF SOFIA  
FACULTY OF HISTORY  
DEPARTEMENT OF ARCHAEOLOGY



## PATABS II

# PRODUCTION AND TRADE OF AMPHORAE IN THE BLACK SEA

Acts of the International Round Table  
held in Kiten, Nessebar and Sredetz,  
September 26-30, 2007

edited by Chavdar Tzochev, Totko Stoyanov and Anelia Bozkova

PATABS II

PRODUCTION AND TRADE  
OF AMPHORAE IN THE BLACK SEA

Acts of the International Round Table  
held in Kiten, Nessebar and Sredetz,  
September 26-30, 2007

Edited by Chavdar Tzochev, Totko Stoyanov and Anelia Bozkova

Sofia 2011

# “Colchean” Amphorae from Abkhazia

Sergey Yu. VNUKOV

Detailed studies of the so-called brown-clay or Colchean amphorae are one of the main tasks of investigation of amphora production in eastern Black Sea area. The previous studies allowed concluding that these amphorae composed one long-lived container type Ch I. It was divided into 4 chronological variants (A-D) and several subvariants.<sup>1</sup> The general unity of morphological development of all “brown-clay” amphorae in all regions, manufactured even in obviously different places, was pointed out. In Roman times only some local morphological varieties inside this unity were outlined. Probably they may be connected with the manufacture of various workshops in different points of eastern Black Sea area.<sup>2</sup>

The clay mass of the vessels under consideration is not homogeneous. It also shows different producing areas of these amphorae. Two main fabrics were recognized.<sup>3</sup> The first fabric includes pyroxene and basaltic sand as a temper in clay mass (pl. XXIII.1). *De visu* such temper looks like black brilliant grains. It is very similar to the mineral additions in Sinopean ceramics. Outcrops of basalt and depositions of black sand in the Black Sea region occur in many places of southern (Sinope, Trapezus, Amisos, etc.) and eastern (Ajaria) Pontic areas. Possibly, vessels with such inclusions were manufactured in Trapezus, “a Sinopean colony in the land of Colchis” (Xenoph., *Anab.*, 4, 8, 20) and in some neighbouring places of southern Colchis.<sup>4</sup>

The second fabric is very variegated. The temper of these amphorae consists of grains and separate minerals of different plutonic (granite, diorite), volcanic (basalt, liparite) and sedimentary (sandstone, shale) rocks and some minerals, which are rather rare in the Pontic region (olivine; pl. XXIII.2).<sup>5</sup> This is essentially sea or river sand of complex composition, widely distributed in eastern Black Sea area. The similar temper is characteristic for local pottery and pithoi in Ajaria, Abkhazia and in some other areas.

The second petrological group is also not homogeneous. It is possible to define several uncertain smaller subgroups. They are distinguished based on both qualitative composition of temper, and quantity of the represented minerals and rocks.<sup>6</sup> Apparently, these subgroups reflect geological features of concrete points of manufacture (workshops).

---

<sup>1</sup> Tsetskhladze & Vnukov 1992, 372; Внукoв 2003, 160-166; Vnukov 2010.

<sup>2</sup> Внукoв 2003, 24, 160, 164; Внукoв 2006, 83, 84.

<sup>3</sup> Внукoв 1992, 83, 84; Внукoв 2006, 45, 80-82.

<sup>4</sup> Внукoв 2006, 82, 83.

<sup>5</sup> Внукoв 2006, 79, 89.

<sup>6</sup> Внукoв 1992, 81, 82; Внукoв 2006, 81, 84.

The containers of the second fabric were probably produced in different parts of central and northern Colchis (fig. 1). It was not possible to trace any correlation between the morphological varieties and the fabrics of the “brown-clay” amphorae of Hellenistic and Early Roman periods. Containers of the same form may have different temper and *vice versa*.<sup>7</sup>



Fig. 1. Map of the eastern Black Sea region.

Recent analyses of amphorae from several sites from Abkhazia (northwestern Colchis – fig. 1) and of geological situation in the region provide new preliminary information on the subject.<sup>8</sup> Thus, the geological situation in the vicinity of Sukhum (Hellenistic Dioskuria and Roman Sebastopolis) differs significantly from that of other regions of Colchis. There are no black sands and rocks with pyroxene in the area. Coastal and river sands have complicated composition, consisting of grains of different light rocks, granite or granite-like plutonic rocks and quartz. It is similar to the temper composition of our Fabric 2.

Local clays are also specific. Usually they are very plastic, fine and rather light. They include ferrous compounds, but not in form of oxides, which causes the red colour of ceramics. The colours of local ceramics made of such clay oscillate from beige through orange to greyish-brown with domination of light tints.

Thus, local ceramic raw materials in Abkhazia differ a great deal from the ferrous materials used for the manufacture of amphorae of intensive brown colour with pyroxene temper, which are widespread in many places in eastern and northern Black Sea areas. Wares produced with Abkhazian raw materials have lighter colour and temper of the second group.

The early “brown-clay” amphorae from Abkhazia belong to variants Ch IA and Ch IB<sub>1</sub>. They are dated from the late 4<sup>th</sup> until the mid-2<sup>nd</sup> centuries BC. These vessels were formed from the mass of both fabrics. The great deal of the early containers found in Abkhazia has ceramic mass of the Fabric 2 (pl. I.3), but the general shape of such vessels has no specifics in comparison to the finds from other sites (fig. 2). Visual analyses of the clay and the temper of these amphorae from Abkhazia show that they are very similar to the local raw materials, as well as to the fabric of some local pots (pl. XXIII.4). This provides the reason to suppose that they are local wares, and also that the manufacture of the “Colchean” amphorae

<sup>7</sup> ВнукOV 2006, 80, 81.

<sup>8</sup> I express deep gratitude to Dr. Alic Gabeliya (State University of Abkhazia) for his hospitality and permission to publish the amphorae from his excavations of Sebastopolis, and to Prof. Vladimir Erlih (State Museum of Oriental Arts, Moscow) for making available the amphorae from Eshera excavations.

was established in Dioskuria or in the neighbouring sites such as Eshera not later than the 3<sup>rd</sup> century BC. Evidently, the containers of the same form made of Fabric 1 were imported.

The shape of Abkhazian amphorae dated from the Late Hellenistic period is also similar to the form of other contemporaneous Colchean containers, and their clay do not differ from the fabric of the early local amphorae. Small amount of goods in these amphorae was exported to the northern Black Sea region, where a few containers of Fabric 2 were found. Several of them have anepigraphic stamps or marks engraved before firing, which is rather typical for local wares.<sup>9</sup>

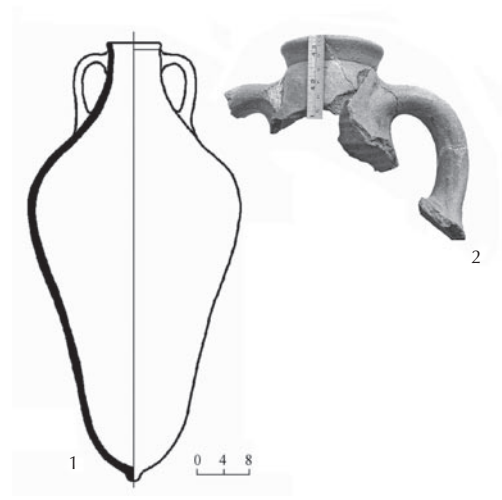


Fig. 2. Amphorae of subvariant Ch IB<sub>1</sub>: 1) Complete vessel (Vani); 2) Fragmented vessel (Eshera).

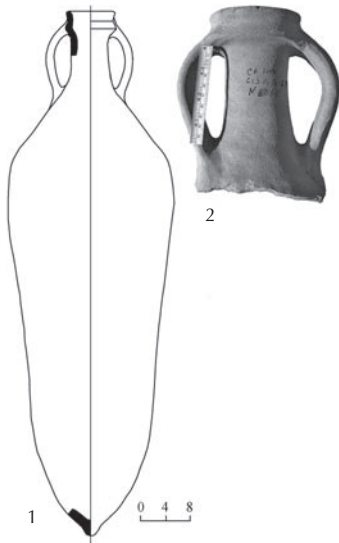


Fig. 3. Amphorae of subvariant Ch IC<sub>2</sub>: 1) Complete vessel (Gorgippia); 2) Fragmented vessel (Sebastopolis).

Mass pottery finds from Sebastopolis are dated to the Late Roman period (the 3<sup>rd</sup>-6<sup>th</sup> centuries AD). It was the period of economic rise in the region, when Colchis exported goods in amphorae to northern and western Black Sea regions and even to eastern Aegean. In that time the number of new amphora workshops increased and new local varieties of the Colchean containers appeared.<sup>10</sup>

Different “Colchean” amphorae are very common in the Roman strata excavated in Sebastopolis. The “brown-clay” containers dated from the 3<sup>rd</sup> century AD belong to two morphological varieties and to two fabrics. One of them is well known amphorae of subvariant Ch IC<sub>2</sub> (big vessels with the rib on the neck – fig. 3). The workshop for the manufacture of these containers was recently open in Gonio (ancient Apsara).<sup>11</sup> But their fabric is distinct from that of the amphorae from Abkhazia.

It is remarkable that in spite of general morphological similarity of Ch IC<sub>2</sub> amphorae from Abkhazia with the vessels from other regions, the studied containers have several technological and

<sup>9</sup> Tsetskhladze 1990, 99-101, fig. 3.

<sup>10</sup> Внукoв 2006, 188.

<sup>11</sup> Khalvashi 2002.

fabric peculiarities. For example, all Ch IC<sub>2</sub> amphorae from Abkhazia have specific technological protuberance inside the toe (fig. 4.1). This was characteristic for all Hellenistic Colchean containers. In Roman times this feature disappeared gradually, and in the 3<sup>rd</sup> century AD it occurred as a relic on big vessels of subvariant Ch IC<sub>2</sub> only.

Moreover, the necks of the discussed amphorae from Abkhazia were handmade in the same spiral band technique (fig. 4.2). This feature is for the first time used on “brown-clay” containers. Usually necks of such vessels were formed on the wheel separately and then put together with the body. Survival of the band technique, possibly, is a local Abkhazian specific.

Furthermore, a majority of the amphorae of subvariant of Ch IC<sub>2</sub> from Sebastopolis differs in fabric from the vessels from other regions. It is difficult to call them, however, true “brown-clay” containers. Their clay has various colours, from light greyish-beige to greyish-brown (pl. I.5-7). It contains sand of complex composition, including quartz, feldspar, grains of rocks and, possibly, olivine and shale. In general, it accords with the composition of the local sands described above. The quotas of these minerals and rocks in certain vessels differ to a great extent. The firing of those amphorae also took place under changing conditions. Thus, the colour and texture of the fabric of local amphorae are very different (pl. I.5-7).

Only few fragments of vessels of subvariant Ch IC<sub>2</sub> discovered in Sebastopolis have Fabric 1 with pyroxene. They also have true dark brown fabric. Probably, it was imported from other regions of Colchis.

Another version of Colchean amphorae, which occurs widely in the strata of the 3<sup>rd</sup> century AD, is rather unusual. They are little vessels with flat band or simple unmarked deflected rim, crooked flat handles, a conical toe without protuberance and with plump or expanding up neck without the rib (fig. 8). Sometimes upper handle roots of these amphorae are such as though they embrace a neck. Looking like an undefined rib under the rim, its formation is peculiar. Formally such vessels should be labeled as subvariant Ch IB<sub>2</sub>. For the time being, amphorae of this variety were unknown in the strata later than the late 1<sup>st</sup> century AD. Most likely, the manufacture of vessels of similar form continued in some parts of Colchis at least up to the late 3<sup>rd</sup> century AD. They were exported from this region in very small quantities (such vessels are known in Tanais (fig. 5.4)). Probably, it is necessary to define them as a late subvariant Ch IB<sub>3</sub>. It is currently impossible to give the full description

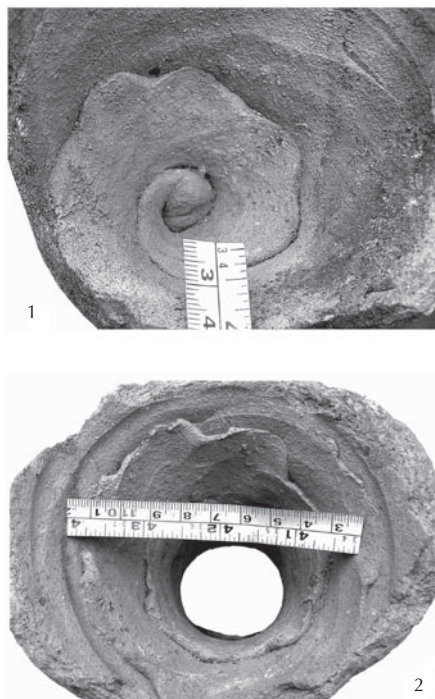


Fig. 4. Amphorae of subvariant Ch IC<sub>2</sub>: toe (1) and neck (2) with the traces of band technique, inside view.

of amphorae of this form, since these vessels are known from fragments only.

The discussed vessels were formed on a wheel in their entirety. They are distinguished clearly from the contemporary amphorae Ch IC<sub>2</sub>, which were discussed above. They are different in fabric as well. The majority of vessels of subvariant Ch IB<sub>3</sub> were formed of the mass of Fabric 1 with big amount of pyroxene. Only about 25% of the similar containers have the clay composition of Fabric 2 which is identical to the clay of the local amphorae of subvariant Ch IC<sub>2</sub>.

Thus, there are two morphological varieties of Colchean amphorae among the materials of the 3<sup>rd</sup> century AD from Sebastopolis. They belong to different

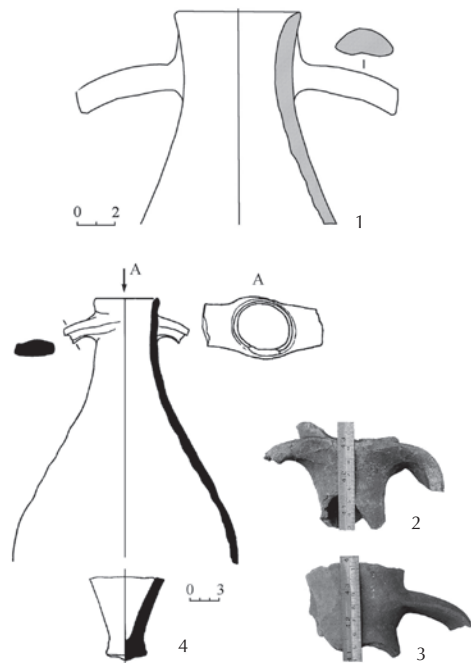


Fig. 5. Fragments of amphorae of subvariant Ch IB<sub>3</sub>: 1-3 – Sebastopolis; 4 – Tanais (after Арсеньева & Науменко 1992, fig. 44).

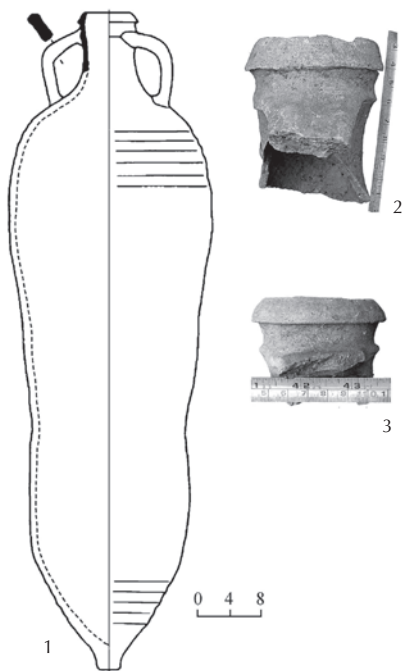


Fig. 6. Amphorae of transitional variety: 1 – complete vessel (Samsun museum, after Kassab Tezgör & Akkaya 2000, fig. 5, 6); 2, 3 – fragmented vessels from Sebastopolis

technological traditions. Evidently, amphorae of the subvariant Ch IC<sub>2</sub> are the local modification of all-Colchidian form. The vessels of subvariant Ch IB<sub>3</sub> originally have probably been imported somewhere from the South.

It was pointed out that a small part of the amphorae of subvariant Ch IB<sub>3</sub> were manufactured from the clay composition of Fabric 2. They were possibly produced in Sebastopolis, or its vicinities, according to the imported patterns. Originally, the output of such vessels was not significant. Later it increased greatly, with local production of similar containers displacing the import.

Serious changes in the amphorae assemblage of Sebastopolis occurred in the first half of the 4<sup>th</sup> century. The number of vessels of Fabric 1 decreased significantly.

While the vessels of Fabric 2 (local?) predominated greatly, amphorae of subvariant Ch IC<sub>2</sub> disappeared gradually. They transformed to the vessels of the new transitional variety, which combine the features of both containers: Ch IC<sub>2</sub> and Ch IB<sub>3</sub> (fig. 6). We can trace the general direction of these changes in amphora shapes, of seeking the optimum form and technology of the discussed vessels. The new amphorae are smaller than vessels Ch IC<sub>2</sub>; they have an imitation of the rib on the neck formed by the finger groove under the rim, specific forms of triangular rim and flat handles (fig. 6). They were all wheel-made. These amphorae were made from the clay composition of Fabric 2 only, and were possibly of local production. Containers of analogous shape found in the sea and kept in Samsun museum were published by D. Kassab Tezgör and M. Akkaya as “types C-E” (fig. 6.1)<sup>12</sup>.

Probably, the described mixture of the features of different amphora varieties, dated from the first half of the 4<sup>th</sup> century, was connected with the mastery of manufacture of Ch IB<sub>3</sub> containers in the local workshops in Abkhazia, which had earlier produced amphorae of subvariant Ch IC<sub>2</sub>.

Later, the rib at the level of the handle lower attachments or its imitation disappeared completely. The triangular band of the rim was in-turned, and its widest part forms a rib resembling the rib of Ch IC<sub>2</sub> amphorae (fig. 7.2-3; pl. XXIII.8). But in this case it was located way above the lower attachments of the handle and was formed not by a curve of a wall of the neck, as on vessels Ch IC<sub>2</sub>, but by extension of the rim. The size of those containers decreased as well. Finally the new variety of small amphorae with a waist (narrowing)

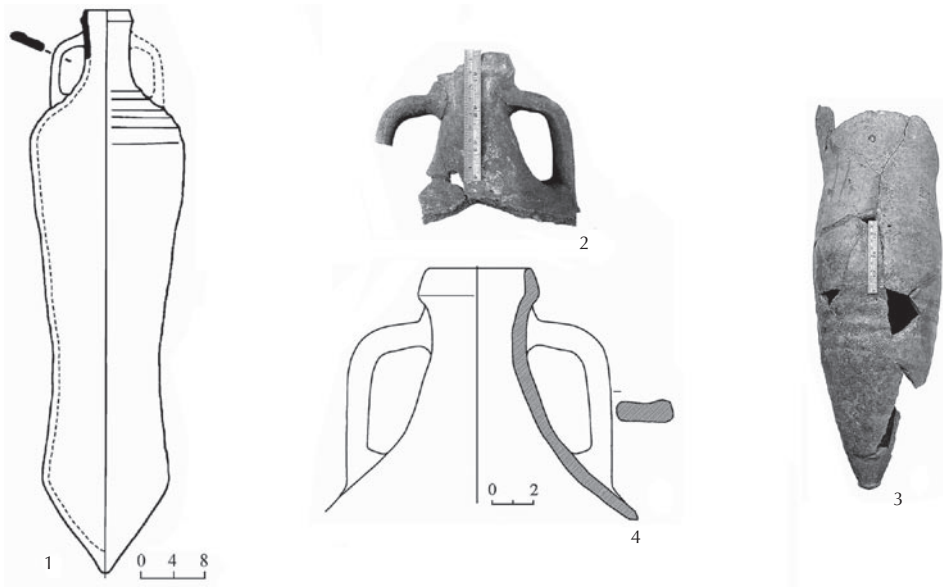


Fig. 7. Amphorae of variant Ch ID: 1) complete vessel (Samsun museum, after Kassab Tezgör & Akkaya 2000, fig. 5.5); 2-4) fragmented vessel from Sebastopolis.

<sup>12</sup> Kassab Tezgör & Akkaya 2000, figs. 5.6,7; 6.8-10,12,13.



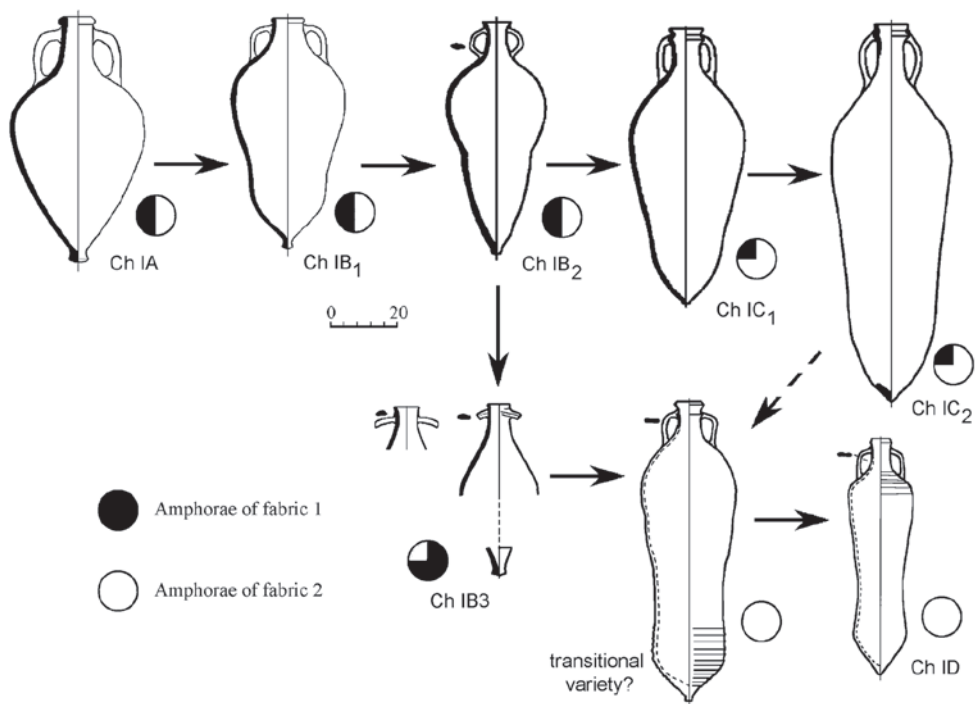


Fig. 8. Scheme of evolution of Colchean or "brown-clay" amphorae.

was elaborated (fig. 7.1-4). It may be labelled as variant Ch ID.<sup>13</sup> Some scholars call them “Tiritaka type”.<sup>14</sup>

All these changes occurred, probably, in the first half and the middle of the 4<sup>th</sup> century AD. From the second half of the century and in the 5<sup>th</sup> century the Colchean containers are presented in Sebastopolis by only variant Ch ID. The clay composition of these vessels belongs to Fabric 2 (pl. XXIII.8) and at least part of them was produced in the district of Sebastopolis. Although similar vessels were made in other parts of Colchis as well, their allocation is a task of the future. They were not imported to Sebastopolis in significant numbers.

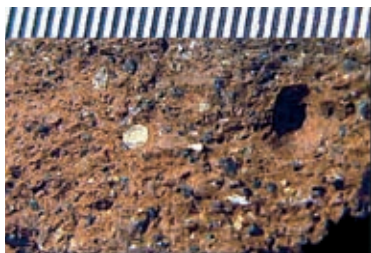
It is remarkable that, on the whole, amphora import to the territory of Abkhazia also decreased during the same time. In the 3<sup>rd</sup> century AD Colchean containers of both fabrics made up about 33% of all the amphorae here, but only half of them were formed of local Fabric 2. In the 4<sup>th</sup> century the quota of all Colchean containers increased up to about 40% of all the amphorae, and the part of local production of such vessels belonging to Fabric 2 increased up to 82%. It suggests a twofold increase in local amphora manufacture in

<sup>13</sup> Kassab Tezgör & Akkaya 2000, types B – fig. 5.4,5, and partly A – fig. 5.3.

<sup>14</sup> Зеецт 1960, 121, pl. XL.103.

Abkhazia. Cheap local wine displaced the imported one and spread all over the Black Sea region.

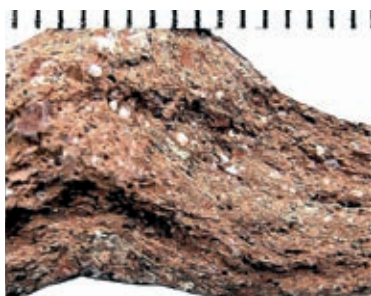
In sum, the study of the geological situation in Sukhum district and the amphora collection from Abkhazia provided the opportunity to complement and specify our ideas about amphora manufacture in Colchis, as well as the evolution of that container type. The improved evolution scheme of “brown-clay” amphorae may be next – **fig. 8**. Moreover, Dioskuria-Sebastopolis and its vicinities, probably, were among the manufacturer centres of Colchean or “brown-clay” containers. Such manufacture could begin here in the late 4<sup>th</sup> – first half of the 3<sup>rd</sup> century BC. It achieved the biggest scope during the Late Roman period, when Colchis exported actively its products practically all over the Black Sea area and beyond. The local containers are distinguishable in terms of a number of morphological and technological features that at a later point, after necessary specifications, will allow us to recognize them with certainty among the wares of the other centres of the eastern Black Sea area.



1



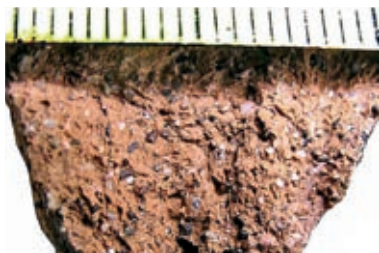
5



2



6



3



7



4



8

# Bibliography

**Абрамов (А.П.) 1989**

К вопросу о локализации центра производства амфор со стаканообразным дном. In: *Проблемы исследования античных городов. Тезисы докладов.* Москва.

**Абрамов (А.П.) 1993**

Античные амфоры. Периодизация и хронология. *Боспорский сборник 3.* Москва, 4-135.

**Ахмеров (Р.Б.) 1947**

Амфоры древнегреческого Херсонеса. *ВДИ 1,* 160-176.

**Ακαμάτης (Ι.) 2000**

*Ενσφράγιστες λαβές αμφορέων από την Αγορά της Πέλλας. Ανασκαφή 1980-1987. Οι ομάδες Παρμενίσκου και Ρόδου.* Αθήνα.

**Аладжов (Ж.) 1993**

Нови амфорни печати от Велики Преслав. *ГНАМ 9,* 101-105.

**Alexandrescu Vianu (M.) 2007**

O lekane din colecțiile Muzeului de istorie națională și arheologie Constanța aparținând grupului de la Viena. *Pictorul de la Callatis – Laurion. Pontica 40,* 101-109.

**Александров (С.) 2007**

Спасителни разкопки в м. Колокита, гр. Созопол. *АОР през 2006 г.* София, 234.

**Алексиева (А.) 1950**

Амфорни печати в Бургаския музей. *ИНМБ 1,* 45-51.

**Alpözen et al. 1995**

Alpözen (T.), Özdaş (A.) & Berkaya (B.) *Commercial Amphoras of the Bodrum Museum of Underwater Archaeology. Maritime Trade of the Mediterranean in Ancient Times.* Bodrum.

**Amouretti (M.-C.) 1986**

*Le pain et l'huile dans la Grèce antique. De l'aire au moulin.* (Annales littéraires de l'Université de Besançon 328). Paris.

**Anderson (J.) 1954**

Excavations on the Kofina Ridge, Chios. *ABSA 49,* 123-172.

**Antonova et al. 1977**

Antonova (I.A.), Danilenko (V.N.), Ivashuta (L.P.), Kadeev (V.I.) & Romanchuk (A.I.) *Middle Age Amphorae from Chersonesus.* (АДСВ 7). Sverdlovsk.

**Αρχοντίδου-Αργύρη (Α.) 1990α**

Κ' Εφορεία Προϊστορικών και Κλασικών Αρχαιοτήτων, Λέσβος. *ΑΔ 41,* 211-212.

**Αρχοντίδου-Αργύρη (Α.) 1990β**

Ελληνιστική Κεραμική από τη Μυτιλήνη, In: *Β' Επιστημονική Συνάντηση για την Ελληνιστική Κεραμική. Χρονολογικά Προβλήματα της Ελληνιστικής Κεραμικής. Πρακτικά Συνεδρίου, Ρόδος 22-25 Μαρτίου 1989.* Αθήνα.

**Ariel (D.T.) 2000**

Imported Greek Stamped Amphora Handles and Appendix: On Amphoras and Ritual Purity. In: Geva (H.) (ed.). *Jewish Quarter Excavations in the Old City of Jerusalem.* Jerusalem, 267-283.

**Ariel (D.T.) & Strikowsky (A.) 1990**

Appendix. In: Ariel (D.T.), *Excavations at the City of David 1978-1985 directed by Yigal Shiloh. Vol II: Imported stamped handles, coins, worked bone, and ivory* (Qedem 30). Jerusalem, 25-29.

**Arribas et al. 1987**

Arribas (A.), Trias (G.), Cerdá (D.) & Hoz (J.) *El Barco de el Sec (Calvià, Mallorca). Estudio de los materiales.* Mallorca.

**Арсеньева (Т.М.) & Науменко (С.А.) 1992.**

*Усадьбы Танауса.* Москва.

**Arthur (P.) 1989**

Aspects of Byzantine Economy: an Evaluation of Amphora Evidence from Italy. In: Déroche & Spieser 1989, 79-93.

**Атанасов et al. 2006**

Атанасов (Г.), Боева (Д.), Петрова (В.), Богданова (Н.) & Чолаков (Р.) 1900 години Дуросторум-Дрѣстѣр-Силистра. Силистра.

**Avram (A.) 1988**

Amfore și țigle ștampilate din colecția "Dr. Horia Slobozianu". *SCIVA* 39 (3), 287-313.

**Avram, (A.) 1996**

*Les timbres amphoriques. Vol. 1: Thasos* (Histria 8). Paris.

**Avram (A.) & Sandu (V.) 1988**

Toarte de amfore ștampilate din colecții particulare bucureștene. *SCIVA* 39 (1), 53-58.

**Bailey (D.M.) 1988**

*A Catalogue of the Lamps in the British Museum. Vol. III: Roman Provincial Lamps*. London.

**Бакърджиев (Св.) & Въндев (Д.) 2006**

*Основи на геостатистиката*. София.

**Bakirtzis (Ch.) 1989**

Byzantine Amphorae. In: Déroche & Spieser 1989, 73-77.

**Балабанов (П.) 1984**

Тракийски тюрзис близо до Бургас. *ИМЮБ* 7, 11-37.

**Балабанов (П.) 1985**

Фракийское святилище возле Дебелта. *Thracia Pontica* 3, 221-237.

**Балабанов (П.) 1999**

Тракийски ритуални ями край с. Дебелт, Бургаска област. *Археология* 3-4, 62-77.

**Balabanov (P.) 2000**

Mécanismes du commerce à l'époque hellénistique dans environs de Messambrie et d'Apollonie Pontique. In: Domaradzka (L.), Bouzek (J.), Rostropowicz (eds.) *Pistiros and Thasos. Structures économiques dans la péninsule Balkanique aux VII<sup>e</sup>-II<sup>e</sup> siècles avant J.-C.* Opole, 87-99.

**Балабанов (П.) 2004**

Предримски монети от Дебелт. In: *ГДА-НБУ* 6. София, 104-119.

**Балабанов (П.) 2005a**

Археологически документи за тракийския град Добелт. In: *Четвърти международен семинар "Поселищен живот в Древна Тракия"*. Ямбол, 221-235.

**Балабанов (П.) 2005b**

Вносът на амфори в Тракия преди елинистическата епоха. In: *Stephanos archaeologicos in honorem professoris Ludmili Getov*. (Studia Archaeologica Universitatis Serdicensis 4). София, 28-40.

**Балабанов (П.) 2005c**

Тасоските амфорни печати от м. "Костадин чешма" и импортьт на острова в района на Бургаския залив. In: Stoyanov (T.), Tonkova (M.), Preshlenov (Ch.) & Popov (Ch.) (eds.) *Heros Hephaistos. Studia in honorem Liubae Ogneanova-Marinova*. Велико Търново, 113-124.

**Balabanov (P.) 2010**

The origin of amphorae with englyphic stamps. In: Kassab Tezgör & Inaishvili 2010, 19-22, pls. 1, 9-11.

**Balabanov (P.) & Garlan (Y.) forthcoming**

Les timbres amphoriques grecs dits d' « Héraclée Pontique » et autres (première moitié du IV<sup>e</sup> siècle av. J.-C.) dans l'établissement de Kostadin Tchechma près de Dobelt (Bulgarie).

**Балболова (М.) 1990**

Дебелт през VIII-X век. *Векове* 1-2, 50-52.

**Балканска (А.) 1962**

Новооткрити амфорни печати във Варна. *Археология* 4, 61-65.

**Балканска (А.) 1984**

Амфори и амфорни печати. In: Димитров (Д.П.), Чичикова (М.), Балканска (А.) & Отненова-Маринова (Л.) *Севтополис. Том I: Бит и култура*. София, 115-157.

**Балканска (А.) 1985**

Амфорни печати от тракийското укрепено селище в м. Сборяново край Исперих. *Археология* 4, 24-30.

**Balkanska (A.) & Tzochew (Ch.) 2008**

Amphora Stamps from Seuthopolis – Revised. In: Gergova (D.), Bozhkova (A.), Popov (Ch.) & Kuzmanov (M.) (eds.) *Phosphorion. Studia in Honorem Mariae Čičikova*. Sofia, 188-205.

**Bărlădeanu Zavatin (El.) 1980**

Noi descoperiri în necropolele callatiene. *Pontica* 13, 216-240.

**Barnea (I.) 1954**

Amforele feudale de la Dinogetia. *SCIV* 5(3-4), 513-530.

**Barnea (I.) 1959**

Descoperiri arheologice din epoca feudală la Mangalia, *MCA* 6, 903-911.

**Barnea (I.) 1967**

Ceramica de import. In: Stefan (G.), Barnea (I.), Comşa (M.) & Comşa (E.) (eds.) *Dinogetia I*. Bucureşti, 229-276.

**Barnea (I.) 1989**

La céramique byzantine de Dobrudja X<sup>e</sup>-XII<sup>e</sup> siècles. In: Déroche & Spieser 1989, 131-142.

**Bayne (N.) 2000**

*The Grey Wares of North-West Anatolia in the Middle and Late Bronze Age and their Relation to the Early Greek Settlements*. (Asia Minor Studien 37). Bonn.

**Baziotopoulou-Valavani (E.) 1994**

Ανασκαφές σε αθηναϊκά κεραμικά εργαστήρια αρχαϊκών και κλασικών χρόνων. In: Coulson (W.D.E.), Palagia (O.), Shear Jr. (T.L.), Shapiro (H.A.) & Frost (F.J.) (eds.) *The Archaeology of Athens and Attica under the Democracy. Proceedings of an International Conference Celebrating 2500 Years of Democracy in Greece, Athens, December 1992*. (Oxbow Monography 37). Oxford, 45-54.

**Beck (C.W.) & Borromeo (C.) 1990**

Ancient Pine Pitch: Technological Perspectives from a Hellenistic Shipwreck. In: Biers (W.R.) & McGovern (P.E.) (eds.) *Organic contents of ancient vessels: Material analysis and archaeological investigation*. (MASCA research papers in science and archaeology 7). Philadelphia, 51-58.

**Beck et al. 1989**

Beck (C.W.), Smart (C.J.) & Ossenkop (D.J.) Residues and Linings in Ancient Mediterranean Transport Amphoras, In: Allen (R.O.) (ed.) *Archaeological Chemistry IV*. (Advances in Chemistry Series 220). Washington DC, 369-380.

**Bekker-Nielsen (T.) (ed.) 2005**

*Ancient Fishing and Fish Processing in the Black Sea Region*. Aarhus.

**Белов (Г.Д.) 1977**

Амфоры из некрополя Херсонеса V-IV вв. до н.э. In: *История и культура античного мира*. Москва, 17-22.

**Белов (Г.Д.) & Стржелецкий (С.Ф.) 1953**

Кварталы XV и XVI (Раскопки 1937 г.). *МИА* 34, 32-109.

**Berlin et al. 2003**

Berlin (A.M.), Ball (T.), Thompson (R.) & Herbert (S.C.) Ptolemaic Agriculture, “Syrian Wheat”, and Triticum Aestivum. *Journal of Archaeological Science* 30, 115-121.

**Бикић (В.) 1994**

*Средњовековна керамика Београда*. Београд.

**Bîrzescu (I.) 2005**

Die Handelsamphoren des „Lesbos-rot“ Serie in Istros. *AM* 120, 45-69.

**Bjelajac (L.) 1989**

Byzantine Amphorae in the Serbian Danubian Area in the 11<sup>th</sup>-12<sup>th</sup> centuries. In: Déroche & Spieser 1989, 109-118.

**Bon (A.) 1931**

L'île de Thasos. Etude de géographie comparée ancienne et moderne. *Annales de Géographie* 1931, 269-286.

**Bon (A.-M.) & Bon (A.) 1957**

*Les timbres amphoriques thasiens* (Etudes Thasiennes 4), Paris.

**Bonifay (M.) 2007**

Que transportaient donc les amphores africaines? In: Papi (E.) (ed.) *Supplying Rome and the Empire: The Proceedings of an International Seminar Held at Siena-Certosa di Pontignano on May 2-4 2004, on Rome, the Provinces, Production, and Distribution* (JRA Supplement 69). Portsmouth RI, 8-31.

**Борисова (В.В.) 1974**

Керамические клейма Херсонеса и классификация херсонесских амфор. *НЭ* 11, 99-124.

**Böttger (B.) 1974**

Die Importkeramik aus dem Spätantiken Donaulimeskastell Iatrus in Nordbulgarien. In: *Actes du IX<sup>e</sup> Congrès International d'Etudes sur les Frontières romaines*. Vienne, 131-136, pls. 28-30.

**Böttger (B.) 1981**

Dipinti aus Iatrus: Spätantike Amforenaufschriften als wirtschaftshistorische Quelle. *Klio* 63, 511-25.

**Bouzek et al. 2007**

Bouzek (J.), Rückl (Št.), Titz (P.) & Tzochev (Ch.) Trade Amphorae. In: Bouzek (J.), Domaradzka (L.) & Archibald (Z.) (eds.) *Pistiros III. Excavations and Studies*. Prague, 133-186.

**Божкова (А.) 2009**

Късноархаичен керамичен фрагмент от Несебър (или още за основаването на Месамбрия. In: Попов & Тенчова 2009, 143-147.

**Божкова et al. 2007**

Божкова (А.) Прешленов (Хр.), Даскалов (М.) & Кияшкина (П.). Спасителни археологически разкопки на ул. Крайбрежна в ААР Старинен Несебър през 2006 г. *АОР през 2006 г.* София, 247-250.

**Божкова et al. 2008**

Божкова (А.), Кияшкина (П.), Петрова (А.) & Марваков (Т.) Спасителни археологически разкопки в некропола на античната гръцка колония Месамбрия и средновековния град Месемврия (Парцел УПИ I Общ, УПИ X Общ, кв. 54). *АОР през 2008 г.* София, 320-323.

**Божкова (А.) & Петрова (А.) 2007**

Спасителни проучвания на надгробна могила на н. Колокита, Рег. № 6000008 по АКБ, Созопол (УПИ 6080-6113, кв. XIX-6143). *АОР през 2006 г.* София, 244-247.

**Божкова (А.) & Петрова (А.) 2008**

Спасително проучване на надгробна могила № 6000008 по АКБ на н. Колокита, Созопол. *АОР през 2007 г.* София, 321-322.

**Божинова (Е.) & Михайлов (Й.) 2009**

Сондажно проучване на обект при км 6+400-6+500 (Археологически структури и дата на обекта. Анализ на керамичния материал от ранножелязната епоха). In: Момчилов et al. 2009, 79-107.

**Braund (D.) 1994**

The Luxuries of Athenian Democracy. *Greece & Rome* 41, 41-8.

**Брашинский (И.Б.) 1964**

Комплекс кровельной черепицы из раскопок Ольвийской агоры 1959-1960. In: Гайдукевич (В.Ф.) (ed.) *Ольвия. Теменос и агора*. Москва-Ленинград, 285-313.

**Брашинский (И.Б.) 1966**

Строительные керамические материалы. Ольвия. In: Зеест (И.Б.) (ed.) *Керамическое производство и античные керамические строительные материалы* (Археология СССР. Свод археологических источников, выпуск Г1-20). Москва, 36-45.

**Брашинский (И.Б.) 1970**

За икономическите връзки на гръцките градове от Югозападното Черноморие в предримската епоха. *Археология* 2, 7-18.

**Брашинский (И.Б.) 1980**

*Греческий керамический импорт на Нижнем Дону*. Ленинград.

**Брашинский (И.Б.) 1983**

К проблеме локализации группы амфор с так называемыми стаканообразными доньями. *КСИА* 174, 8-10.

**Брашинский (И.Б.) 1984**

*Методы исследования античной торговли (на примере Северного Причерноморья)*. Ленинград.

**Broneer (O.) 1938**

Excavations on the North Slope of the Akropolis, 1937. *Hesperia* 7, 161-263.

**Brownlee (A.B.) 1989**

Attic Black Figure from Corinth: II. *Hesperia* 58, 361-395.

**Brun (J.-P.) 2003**

*Le vin et l'huile dans la Méditerranée antique: viticulture, oléiculture et procédés de fabrication*. Paris.

**Brun (J.-P.) 2004a**

*Archéologie du vin et de l'huile, de la préhistoire à l'époque hellénistique*. Paris.

**Brun (J.-P.) 2004b**

*Archéologie du vin et de l'huile, de l'Empire romain*. Paris.

**Bucholtz (H.G.) 1975**

*Methymna. Archäologische Beiträge zur Topographie und Geschichte von Nordlesbos*. Mainz am Rhein.

**Булгаков (В.В.) 2000a**

Византийские амфоры IX-XIV вв.: основные типы. *Восточноевропейский археологический журнал* 4 (5) (<http://archaeology.kiev.ua/journal/040700/bulgakov.htm>).

**Булгаков (В.В.) 2000b**

*Византийские амфорные клейма XI в. с монограммой имени Константина* (<http://archaeology.kiev.ua/byzantine/amphorae/stamps/bulgakov1.htm>).

**Булгаков (В.В.) 2000c**

*Византийские амфорные клейма XIV в. из Солхата, Херсонеса и Судака* (<http://archaeology.kiev.ua/byzantine/amphorae/stamps/bulgakov2.htm>).

**Булгаков (В.В.) 2000d**

Штамп для клеймения византийских амфор XI в. *Восточноевропейский археологический журнал* 1 (2) (<http://archaeology.kiev.ua/journal/010100/bulgakov.htm>).

**Buzoianu (L.) 1979**

Noi ștampile de amfore de la Callatis. *Pontica* 12, 76-95.

**Buzoianu (L.) 1984**

Despre începuturile importului de amfore ștampilate în cetățile grecești Tomis și Callatis. *Pontica* 17, 51-61.

**Buzoianu (L.) 1986**

Les premières importations d'amphores timbrées dans les cités grecques de Tomi et de Callatis. In: Empereur & Garlan 1986, 407-415.

**Buzoianu (L.) & Bărbulescu (M.) 2006**

Amphores de provenance diverse découvertes à Albești (départ. de Constantza). In: *Pontos Euxeinos. Beiträge zur archäologie und Geschichte des antiken schwarzmeer-und balkanraumes*. Langenweissbach, 45-56.



**Buzoianu (L.) & Bărbulescu (M.) 2008**

*Albești. Monografie arheologică. Vol. I.*  
Constanța.

**Buzoianu (L.) & Cheluță-Georgescu (N.) 1983**

Ștampile de amfore inedite de la Callatis. *Pontica* 16, 1983, 149-188.

**Caley (E.R.) & Richards (J.F.C.) 1956**

*Theophrastus on Stones.* Columbus, Ohio.

**Callender (M.H.) 1965**

*Roman Amphorae. With an Index of Stamps.*  
London.

**Campbell (M.T.) 1938**

A Wheel of the Black-Figured Period at Corinth.  
*Hesperia* 7, 557-611.

**Canarache (V.) 1957**

*Importul amforelor ștampilate la Istria.*  
București.

**Canarache (V.) 1961**

L'édifice à mosaïque découvert devant le port de Tomis. *Studiid Clasice* 3, 227-240.

**Чангова (Й.) 1951**

Средновековни амфори в България. *ИАИ* 22,  
243-261.

**Charters et al. 1993**

Charters (S.), Evershed (R.P.), Goad (L.J.),  
Leyden (A.), Blinkhorn (P.W.) & Denham (V.)  
Quantification and Distribution of Lipid in  
Archaeological Ceramics: Implications for Sam-  
pling Potsherds for Organic Residue Analysis  
and the Classification of Vessel Use. *Archaeom-  
etry* 35, 211-223.

**Clarysse (W.) & Vandorpe (K.) 1995**

*Zénon, un homme d'affaire grec à l'ombre des  
pyramides.* Leuven.

**Clinkenbeard (B.) 1982**

Lesbian Wine and Storage Amphorae: a  
Progress Report on Identification. *Hesperia* 51,  
248-267.

**Clinkenbeard (B.) 1986**

Lesbian Wine and Storage Amphorae: Ques-  
tions Concerning Collaboration. In: Empereur  
& Garlan 1986, 353-362.

**Condamin (J.) & Formenti (F.) 1976**

Recherche de traces d'huile d'olive et de vin  
dans les amphores antiques. *Figlina* 1, 143-158.

**Condamin et al. 1976**

Condamin (J.), Formenti (F.), Metais, (M.D.),  
Michel (M.) & Bond (P.) The Application of  
Gas Chromatography to the Tracing of Oil in  
Ancient Amphorae. *Archaeometry* 16, 195-201.

**Conovici (N.) 1998**

*Les timbres amphoriques. Vol. 2: Sinope (tuiles  
timbrées comprises)* (Histria 8. Corpus interna-  
tional des timbres amphoriques 3). Bucharest.

**Conrad (S.) 1999**

Zu Typologie und Funktionsbestimmung der  
amphoren aus dem Kastell Iatrus. In: Bülow (G.  
von) & Milcheva, (A.) (eds.) *Der Limes an der un-  
teren Donau von Diokletian bis Herakios. Vorträge  
der Internationalen Konferenz, Svistov, Bulgarien  
(1-5 September 1998)*. Sofia, 175-188.

**Cook (R.M.) 2003 (1998)**

Grey Ware and Bucchero. In: Cook & Dupont  
2003, 135-136.

**Cook (R.M.) & Dupont (P.) 2003 (1998)**

*East Greek Pottery.* London.

**Damyantov (M.) 2005**

Graves with Circles of Amphorae in the Greek  
Necropoleis in the Black Sea. In: *Stephanos  
archaeologicos in honorem professoris Ludmili  
Getov.* (Studia Archaeologica Universitatis  
Serdicensis 4). София, 214-223.

**Дамянов (M.) forthcoming**

Бележки върху териториите на гръцките  
полиси по Западния Понт. In: Рабаджиев  
(К.), Попов (Хр.), Кацарова-Попова (В.) &  
Дамянов (М.) (eds.) *Сборник в памет на  
акад. проф. Д.П. Димитров.*

**Дамянов (Ст.) 1992**

Таможенный центр IX в. в районе Дебелта.  
In: *Bulgaria Pontica medii aevi 3. Nesebre, 27-31 mai 1985*. Sofia. 247-253.

**Davis (J.) 1973**

*Statistics and Data Analysis in Geology*. London-Sydney-Toronto.

**De Angelis (F.) 2006**

Going Against the Grain in Sicilian Economics.  
*Greece & Rome* 53, 29-47.

**Debidour (M.) 1979**

Réflexions sur les timbres amphoriques thasiens. In: *Thasiaca*. (BCH Supplément 5). Athènes-Paris, 269-314.

**Debidour (M.) 1986**

En classant les timbres thasiens. In: Empereur & Garlan 1986, 311-334.

**Дебидур (М.) 1992**

Эмблемы и их варианты на фасосских клеймах “позднего” типа. In: Кац & Монахов 1992, 111-137.

**Debidour (M.) 1998**

La tutelle de la cité sur la production des amphores à Thasos à la lumière d'un exemple: le « groupe au rhyton ». *Topoi* 8, 591-606.

**Debidour (M.) 1999a**

*Les timbres amphoriques thasiens de type récent. Méthodologie, chronologie et interprétation*. (Synthèse d'une habilitation soutenue à l'université Lumière Lyon 2 le 23 octobre 1999).

**Debidour (M.) 1999b**

Kleitos, un magistrat thasien attesté sur les rives de la mer Noire. In: Garlan 1999a, 81-89.

**Debidour (M.) 2008**

Peut-on parler d'un marché des amphores thasiennes? In: Roman (Y.) & Dalaison (J.) (eds.) *L'économie antique, une économie de marché? Tables rondes de Lyon 2, 2004*. Paris 2008, 87-109.

**Дечев (Д.) 1936**

Антични паметници. *ГНМ* 7 (1932-1934), 47-59.

**Demangel (R.) & Mamboury (E.) 1939**

*Le quartier des Manganes et la première région de Constantinople*. Paris.

**Déroche (V.) & Spieser (J.-M.) (eds.) 1989**

*Recherches sur la céramique byzantine. Actes du colloque EFA-Université de Strasbourg, Athènes 8-10 avril 1987*. (BCH Supplément 18). Athènes-Paris.

**De Scherzer (Ch.) 1880**

*Smyrne considérée au point de vue géographique, économique et intellectuel*. Leipzig.

**Desy (P.) 1993**

*Recherches sur l'économie apulienne au II<sup>e</sup> et au I<sup>er</sup> siècle avant notre ère*. (Collection Latomus 221). Brussels.

**Dietler (M.) & Herbich (I.) 1998**

Habitus, Techniques, Style: an Integrated Approach to the Social Understanding of Material Culture and Boundaries. In: Stark (M.) (ed.) *The Archaeology of Social Boundaries*. Washington DC, 232-263.

**Димитров (Б.) 1974**

Печатите върху доримски керемиди от Черноморието като източник на историческа информация. In: *Студентски проучвания 2*. София, 92-98.

**Docter (R.F.) 2008**

Varia. In: Docter et al. 2008, 167-174.

**Docter et al. 2008**

Docter (R.F.), Panayotova (K.), de Boer (J.), Donnellan (L.), Van de Put (W.) & Bechtold (B.) (eds.) *Apollonia Pontica 2007*. Gent.

**Doğer (E.) 1991**

Les produits agricoles aux environs de Clazomènes dans les sources antiques. In: Malay (H.) (ed.) *Erol Atalay Memorial*. Izmir, 47-50.

**Domingo (C. de) & Johnston (A.) 2003**

A Petrographic and Chemical Study of East Greek and Other Archaic Transport Amphorae. *Eulimene* 4, 27-60.

**Дончева-Петкова (Л.) 1977**

Българска битова керамика през ранното средновековие (втора половина на 6 – края на 10 век). София.

**Dorrego et al. 2004**

Dorrego (F.), Carrera (F.) & Luxán (M.P.) Investigations on Roman Amphorae Sealing Systems. *Materials and Structures* 37, 369-374.

**Драганов (Д.) 1993**

Монетосеченето на Кабиле. София.

**Дражева (Ц.) & Недев (Д.) 2003**

Археологически проучвания на територията на ААР Аполония-Созопол. In: *АОР през 2002*. София, 107-108.

**Дремсизова (Цв.) 1963**

Керемиди с печати от некропола на Аполония. In: Венедиков (И.), Герасимов (Т.), Дремсизова (Цв.), Иванов (Т.), Младенова (Я.) & Велков (В.) (eds.) *Аполония. Разкопки в некропола на Аполония през 1948-1949*. София, 321-324.

**Duncan-Jones (R.) 1974**

*The Economy of the Roman Empire*. Cambridge.

**Dupont (P.) 1996**

Amphores archaïques de Grèce propre en mer Noire. Etat de la question. *Il Mar Nero* 2, 85-98.

**Dupont (P.) 1999**

Marques signalétiques avant cuisson sur les amphores ioniennes archaïques, *Pontica* 32, 9-18.

**Dupont (P.) 2003 (1998)**

Archaic East Greek Trade Amphoras. In: Cook & Dupont 2003, 142-191.

**Dupont (P.) 2005a**

Archaic Greek Amphoras from Berezan in the Hermitage Collection. In: Соколов (С.Л.) (ed.) *Борисфен-Березань. Археологическая коллекция Эрмитажа*. Санкт-Петербург, 41-69.

**Dupont (P.) 2005b**

Les amphores commerciales grecques archaïques. Trouvailles du temple d'Aphrodite (Fouilles 1972-1981). In: Alexandrescu (P.) (ed.) *La zone sacrée d'époque grecque: fouilles 1915-1989*. (Histria 7). Bucuresti, 218-255.

**Dupont (P.) & Kacharava (D.) 2002**

Traces de poissage sur des amphores archaïques de Simagrè (Colchide). In: Faudrot (M.), Fraysse (A.) & Geny (E.) (eds.) *Pont-Euxin et commerce. La genèse de la « route de la soie »*. *Actes du IX<sup>e</sup> Symposium de Vani (Cochide) – 1999*. Paris, 219-225.

**Dupont (P.) & Skarlatidou (E.) 2005**

Les débuts de la colonisation grecque en mer Noire: éléments de chronologie amphorique. In: Kacharava (D.), Faudot (M.) & Geny (E.) (eds.) *Pont-Euxin et polis. Polis hellenis et polis barbaron. Actes de X<sup>e</sup> Symposium de Vani – 23-26 septembre 2002. Hommage à Otar Lordkipanidzé et Pierre Lévêque*. 77-82.

**Джуранов (С.) 1992**

Стратиграфия на еоенската серия в Бургаско. *СнБГД* 53 (2), 47-59.

**Eiring et al. 2004**

Eiring (J.), Finkielstein (G.), Lawall (M.) & Lund (J.) Concluding Remarks. In: Eiring & Lund 2004, 459-466.

**Eiring (J.) & Lund (J.) (eds.) 2004**

*Transport Amphorae and Trade in the Eastern Mediterranean. Acts of the International Colloquium at the Danish Institute at Athens, September 26-29, 2002*. (Monographs of the Danish Institute at Athens 5). Athens.

**Ельницкий (Л.А.) 1940**

О боспорских амфорных клеймах. *ВДИ* 3-4, 318-324.

**Empereur (J.-Y.) 1998**

Les amphores complètes du Musée d'Alexandrie: Importations et productions locales. In: Empereur (J.-Y.) (ed.). *Commerce et artisanat dans l'Alexandrie Hellénistique et Romaine* (BCH Supplément 33). Paris, 393-399.

**Empereur (J.-Y.) & Garlan (Y.) (eds.) 1986**

*Recherches sur les amphores grecques*. (BCH Supplément 13). Athènes-Paris.

**Empereur (J.-Y.) & Garlan (Y.) 1987**

Bulletin Archéologique: Amphores et timbres amphoriques. *Revue des Etudes Grecques* 100, 58-109.

**Empereur (J.-Y.) & Picon (M.) 1989**

Les régions de production d'amphores impériales en Méditerranée orientale. In: *Amphores romaines et histoire économique: dix ans de recherche. Actes du Colloque de Sienna (22-24 Mai 1986)*, 223-248.

**Erten et al. 2004**

Erten (H.N.), Kassab Tezgör (D.), Türkmen (I.R.) & Zararsız (A.) The Typology and Trade of the Amphorae of Sinope. Archaeological Study and Scientific Analyses. In: Eiring & Lund 2004, 103-115.

**Evershed (R.P.) 2008**

Experimental Approaches to the Interpretation of Absorbed Organic Residues in Archaeological Ceramics. *World Archaeology* 40, 26-41.

**Ex Baetica Amphorae 2000**

*Congresso Internacional Ex Baetica Amphorae. Conservas, aceite y vino de la Bética en el Imperio Romano, Sevilla – Ecija, 17 al 20 le diciembre de 1998*. 4 vols. Ecija.

**Fedoseev (N.F.) 1999**

Classification des timbres astynomiques de Sinope. In: Garlan 1999a, 27-48.

**Филов (Б.) 1937**

Куполните гробници при Мезек. *ИАИ* 11, 1-116.

**Finkielsztejn (G.) 1990**

*Amphores et timbres d'amphores importées en Palestine à l'époque hellénistique: orientations de recherches et premiers résultats*. Memoir of the Académie des Inscriptions et Belles-Lettres. Ecole Biblique et Archéologique de Jérusalem. (Unpublished).

**[Finkielsztejn (G.)] 1997**

Seals Impressions on the Handles of Amphorae. In: Zemer (A.) (ed.) *From the Treasures of Caesarea. Haifa Museum. The National Maritime Museum*, 52-55, 67 (Catalogue of exhibition; article not signed).

**Finkielsztejn (G.) 1998**

More Evidence on John Hyrcanus I's Conquests: Lead Weight and Amphora Stamps. *Bulletin of the Anglo Israel Archaeological Society* 16, 33-63.

**Finkielsztejn (G.) 1999**

Hellenistic Jerusalem: The Evidence of the Rhodian Amphora Stamps. In: Faust (A.) & Baruch (E.) (eds.) *New Studies on Jerusalem, Proceedings of the Fifth Conference, December 23<sup>rd</sup> 1999*. Ramat Gan, 21-36.

**Finkielsztejn (G.) 2000**

Amphores importées au Levant Sud à l'époque hellénistique. In: *Ε' επιστημονική συνάντηση για την ελληνιστική κεραμική*. Αθήνα, 207-220, pl. 105-112.

**Finkielsztejn (G.) 2001**

*Chronologie détaillée et révisée des éponymes amphoriques rhodiens de 270 à 108 av. J.-C. environ. Premier bilan*. (British Archaeological Reports International Series 990). Oxford.

**Finkielsztejn (G.) 2006**

Production et commerce des amphores hellénistiques : récipients, timbrage et métrologie. In: Descat (R.) (ed.) *Approches de l'économie hellénistique*. (Entretiens d'archéologie et d'histoire 7). Saint-Bertrand-de-Comminges, 17-35.

**Florescu (G.) & Florescu (R.) 1959**

Săpăturile arheologice de la Capidava. *MCA* 6, 617-627.

**Franke (P.R.) & Marathaki (I.) 1999**

*Wine and Coins in Ancient Greece.* Athens.

**Frontisi-Ducroux (F.) 1991**

*Le dieu-masque, une figure du Dionysos d'Athènes.* Paris-Rome.

**Furtwängler (A.) 1906**

*Aegina, das Heiligthum der Aphaia.* München.

**Gabrielsen (V.) 1997**

*The Naval Aristocracy of Hellenistic Rhodes* (Studies in Hellenistic Civilization 6). Aarhus.

**Gabrielsen (V.) 2001**

The Rhodian Associations and Economic Activity. In: Archibald (Z), Davies (J.K.), Gabrielsen (V.) & Oliver (G.J.) (eds.) *Hellenistic Economies.* London-New York, 215-244.

**Гансова (Э.А.) 1966**

Комплексы керамической тары. *Материалы по археологии северного Причерноморья* 5, 72-77.

**Garlan (Y.) 1966**

Contribution à une étude stratigraphique de l'enceinte thasienne. *BCH* 90, 586-652.

**Garlan (Y.) 1979**

Koukos. Données nouvelles pour une nouvelle interprétation des timbres amphoriques thasiens. In: *Thasiaca.* (BCH Supplément 5). Athènes-Paris, 213-268

**Garlan (Y.) 1986**

Quelques nouveaux ateliers amphoriques à Thasos. In: Empereur & Garlan 1986, 201-276.

**Garlan (Y.) 1989**

Le comblement d'un puits public à Thasos. 2. Les timbres céramiques. *BCH* 113, 477-480.

**Garlan (Y.) 1993**

Nouvelles remarques sur la chronologie des timbres amphoriques thasiens. *JSav*, 149-181.

**Garlan (Y.) 1995**

A propos des timbres amphoriques trouvés en Bulgarie. In: *Studia in honorem Georgii Mihailov.* Sofia, 191-195.

**Garlan (Y.) (ed.) 1999a**

*Production et commerce des amphores anciennes en Mer Noir. Colloque international organisé à Istanbul, 25-28 mai 1994.* Aix-en Provence.

**Garlan (Y.) 1999b**

*Les timbres amphoriques de Thasos. I. Timbres protothasiens et thasiens anciens.* (Études thasiennes 17). Athènes-Paris.

**Garlan (Y.) 2000**

*Amphores et timbres amphoriques grecs: entre érudition et idéologie.* Paris.

**Garlan (Y.) 2004**

*Les timbres céramiques sinopéens sur amphores et sur tuiles trouvés à Sinope. Présentation et Catalogue.* (Varia Anatolica 16. Corpus international des timbres amphoriques 10). Paris.

**Garlan (Y.) 2004-2005**

En visitant et revisitant les ateliers amphoriques de Thasos. *BCH* 128-129, 269-329.

**Гайдукевич (В.) 1952**

Раскопки Тиритаки в 1935-1940 гг. *МИА* 25, 15-134.

**Georgescu (V.) & Lascu (S.) 1995**

*Callatis. Micromonografie.* Mangalia.

**Гетов (Л.) 1995**

*Амфори и амфорни печати от Кабиле (IV-II в. пр.н.е.).* София.

**Getov 2000 (L.)**

On the Chronology of Amphora Stamps of Ἀντίφιλος. In: *Studia in memoriam Velizari Velkov.* (Thracia 13). Sofia, 149-153.

**Гетов (Л.) 2006**

ΚΑΒΥΛΗΝΩΝ и основанията за една хипотеза. In: *Поселищен живот в Тракия. Четвърти международен симпозиум Ямбол-Кабиле, 9-11 ноември 2005 г.* Ямбол, 105-108.

**Ghali-Kahil (L.) 1960**

*La céramique grecque (fouilles 1911-1956).* (Etudes Thasiennes 7). Paris.

**Golofast (L.A.) 2003**

Cherson in the 7<sup>th</sup> c. AD: the Archaeological Aspect. In: Tsetskhladze (G.R.) (ed.) *Ancient West & East* 2 (1), 96-115.

**Господинов (Д.) 2005**

Плоча с релеф на букраний от елинистическата епоха открита в Несебър. In: Stoyanov (T.), Tonkova (M.), Preshlenov (Ch.) & Popov (Ch.) (eds.) *Heros Hephaistos. Studia in honorem Liubae Ogneva-Marinova.* Veliko Tarnovo, 165-175.

**Горина (Л.В.) 1970**

Походът на граф Амедей VI Савойски против България през 1366-1367 г. *Исторически преглед* 6, 71-82.

**Grace (V.R.) 1953**

Wine Jars. In: Boutler (C.) Pottery from the mid-Fifth Century from a Well in the Athenian Agora. *Hesperia* 22, 101-110.

**Grace (V.R.) 1956**

Stamped Wine Jars Fragments. In: *Small Objects from the Pnyx. II.* (Hesperia Supplements 10), 113-189.

**Grace (V.R.) 1971**

Samian Amphoras. *Hesperia* 40, 52-95.

**Grace (V.R.) 1974**

Revisions in Early Hellenistic Chronology. *AM* 89, 193-203

**Grace (V.R.) 1979a**

Exceptional Amphora Stamps. In: Kopcke (G.) & Moore (M.) (eds.) *Studies in Classical Art and Archaeology.* Locust Valley, 117-129.

**Grace (V.R.) 1979b**

*Amphoras and the Ancient Wine Trade.* (Agora Picture Book 6, rev. edition). Athens.

**Grace (V.R.) 1985**

The Middle Stoa Dated by Amphora Stamps. *Hesperia* 54, 1-54, pls. 1-4.

**Gramatopol (M.) & Poenaru****Bordea (Gh.) 1969**

Amphora Stamps from Callatis and South Dobrudja. *Dacia NS* 13, 127-282.

**Grammenos (D.V.) & Petropoulos****(E.K.) (eds.) 2003**

*Ancient Greek Colonies in the Black Sea I.* Thessaloniki.

**Grünbart (M.) & Lochner-Metaxas (S.) 2004**

Stempel(n) in Byzanz. In: Horander (W.), Koder (J.) & Stassinopoulou (M.) (eds.) *Wiener Byzantinistik und Neogräzistik: Beiträge zum Symposium Vierzig Jahre Institut für Byzantinistik und Neogräzistik der Universität Wien im Gedenken an Herbert Hunger.* Wien, 4.-7. December 2002 (Byzantina et Neograeca Vindobonensia 24). Vienna, 177-189.

**Gueorguieva (N.) 1996**

*Thasian amphora stamps. Catalogue of the Thasian amphora stamps from Apollonia Pontica.* (Manuscript).

**Günsenin (N.) 1989**

Recherches sur les amphores byzantines dans les musées turcs. In: Déroche & Spieser 1989, 267-276.

**Günsenin (N.) 1990**

*Les amphores byzantines (X<sup>e</sup>-XIII<sup>e</sup> siècles). Typologie, production, circulation d'après les collections turques.* Paris.

**Günsenin (N.) 1993**

Ganos-centre de production d'amphores à l'époque byzantine. *AnaAnt* 2, 193-201.

**Günsenin (N.) 1995**

Ganos: résultats des campagnes de 1992 et 1993. *AnaAnt* 3, 165-178.

**Gyuzelev (M.) 2003**

Settlement Structure of the Apollonian territory and the Thracian Hinterland. In: Grammenos & Petropoulos 2003, 107-119.

**Gyuzelev (M.) 2008**

*The West Pontic Coast between Emine Cape and Byzantion during the First Millennium BC.* Burgas.

**Гюзелев (М.) 2008**

Спасителни археологически проучвания на обект „Тракийска крепост“, северен бряг на Мандренското езеро, м. Кантона при с. Черни връх, община Камено, област Бургас. In: *АОР през 2007 г.* София, 307-309.

**Halstead (P.) 1989**

The Economy has a Normal Surplus: Economic Stability and Social Change among Early Farming Communities of Thessaly, Greece. In: Halstead (P.) & O'Shea (J.) (eds.) *Bad Year Economics: Cultural Responses to Risk and Uncertainty.* Cambridge, 68-80.

**Hampe (R.) & Winter (A.) 1965**

*Bei Töpfern und Ziegeln in Südtalien, Sizilien und Griechenland.* Mainz.

**Ханджийска (В.) & Лозанов (И.) 2010**

Кабиле през елинистическата епоха (по данни от последните археологически проучвания). In: *Югоизточна България през II-I хилядолетие пр. Хр.* Варна, 247-269.

**Hansen et al. 2004**

Hansen (M.H.), Spencer (N.) & Williams (H.) Lesbos. In: Hansen (M.H.) & Nielsen (T.H.) (eds.) *An Inventory of Archaic and Classical Poleis.* Oxford.

**Hansson (M.) & Foley (B.) 2008**

Ancient DNA Fragments inside Classical Greek Amphoras Reveal Cargo of 2400-Year-Old Shipwreck. *Journal of Archaeological Science* 35, 1169-1176.

**Hayes (J.W.) 1971**

A New Type of Early Christian Ampulla. *ABSA* 66, 243-248.

**Hayes (J.W.) 1972**

*Late Roman Pottery.* Rome.

**Hayes (J.W.) 1973**

The Pottery. In: Boardman (J.) & Hayes (J.). *Excavations at Tocra 1963-1965. The Archaic Deposits I.* (British School of Archaeology at Athens Supplementary Volume 4), 19-148.

**Hayes (J.W.) 1983**

The Villa Dionysos Excavations, Knossos: the Pottery. *ABSA* 78, 97-169.

**Hayes (J.W.) 1992**

*Excavations at Saraçhane in Istanbul. Vol. II: The Pottery.* Princeton.

**Hermay (A.) & Panayotova (K.) 2006**

La nécropole d'Apollonia du Pont. Nouvelles découvertes de la mission franco-bulgare. *Archaeologia* 431, 52-63.

**Hill (S.J.) 1986**

The Brickstamps. In: Harrison (R.M.) (ed.) *Excavations at Saraçhane in Istanbul.* Princeton, New Jersey, 207-225.

**Hitchner (R.B.) 2002**

Olive Production and the Roman Economy: The Case for Intensive Growth in the Roman Empire. In: Scheidel & Reden 2002, 71-86.

**Hopkins (K.) 2002**

Rome, Taxes, Rents and Trade. In: Scheidel & Reden 2002, 190-232.

**Inaishvili (N.) 1993**

წიხისდობის I-IV საუკუნეების არქეოლოგიური ძეგლები [The archaeological monuments of Tsikhidziri, 1<sup>st</sup>-6<sup>th</sup> c. AD]. Tbilisi.

**Ionescu (M.) & Georgescu (V.) 1998**

Le système défensif callatien. In: *The Roman Frontier at the Lower Danube 4<sup>th</sup>-6<sup>th</sup> Centuries*. (Studia Danubiana 1). Bucharest. 205-219.

**Ionescu (M.) & Papuc (Gh.) 2005**

*Sistemul de apărare a litoralului Dobrogei române. Sec. I-III p. Chr.* Constanța.

**Иванов (Т.) 1963**

Антична керамика от некропола на Аполония. In: Венедиков (И.) (ed.). *Аполония. Разкопките в некропола на Аполония през 1947-1949*. София, 65-274.

**Janušević (Z.V.) & Ščeglov (A.N.) 2002**

Paleoethnobotanical Remains. In: Hannestad (L.), Stolba (V.F.) & Ščeglov (A.N.) (eds). *Panskoje I. The Monumental Building U6*. Aarhus, 327-331.

**Johnson (G.) 1978**

Information Sources and the Development of Decision-Making Organizations. In: Redman (C.), Berman (M.J.), Curtin (E.V.), Langhorne Jr. (W.T.), Versaggi (N.M.) & Wanser (J.C.) (eds.) *Social Archaeology: Beyond Subsistence and Dating*. New York, 87-112.

**Johnson (G.) 1982**

Organizational Structure and Scalar Stress. In: Renfrew (C.), Rowlands (M.) & Abbott Segraves (B.) (eds.). *Theory and Explanation in Archaeology*. New York, 389-421.

**Johnston (A.W.) 1991**

An Archaic Amphora of Thasian Type. *Hesperia* 60, 363-365.

**Johnston (A.W.) & Jones (R.E.) 1978**

The 'SOS' Amphora. *ABSA* 73, 103-141.

**Jones (R.E.) et al. 1986**

Jones (R.E.), Boardman (J.), Catling (H.W.), Mee (C.B.), Phelps (W.W.) & Pollard (A.M.) *Greek and Cypriot Pottery: A Review of Scientific Studies*. (Fitch Laboratory Occ. Papers 1). Athens.

**Йорданов (Ив.) 1992**

Печатите на комеркиариата Дебелт. In: *Поселищни проучвания*. (ДИОС 2). София, 19-158.

**Кънчев (И.) 1995**

*Обяснителна записка към геоложка карта на България в М 1: 100 000. Картен лист Долни чифлик*. София.

**Karadima (Ch.) 2004**

Ainos: An Unknown Amphora Production Centre in the Evros Delta. In: Eiring & Lund 2004, 155-161.

**Карайотов (И.) 1975**

Тракийска крепост на северния бряг на Мандренското езеро. *Изкуство* 3-4, 25-29.

**Карайотов (И.) 1992**

Монетосеченето на Месамбрия. Бургас.

**Karayotov (I.) 1994a**

*The Coinage of Mesambria I. Silver and Gold Coins of Mesambria*. Veliko Turnovo.

**Karayotov (I.) 1994b**

La Χώρα de Mesambria Pontica d'après les données archéologiques et numismatiques. – In: *Studies on Settlement Life in Ancient Thrace. Proceedings of the Third International Symposium "Calybe"*. Jambol, 283-292.

**Карайотов (И.) 2006**

Циркуляцията на месамбрийските бронзови монети. *ИАИ* 39, 127-148.

**Карайотов et al. 2000**

Карайотов (И.), Кияшкина (П.) & Господинов (Д.) *Бургас, вечното пристанище*. Бургас.



**Kassab Tezgör (D.) 1998**

Prospection sous-marine près de la côte sino-péenne: transport d'amphores depuis l'atelier et navigation en mer Noire. *AnaAnt* 6, 443-449.

**Kassab Tezgör (D.) 2002**

La production sinopéenne et ses relations avec la Colchide à l'époque romaine. In: Lordkipanidze (O.) & Lévêque (P.) (eds.). *Pont-Euxin et commerce. Actes du IX<sup>e</sup> Symposium de Vani*. Paris, 199-218.

**Kassab Tezgör (D.) 2010a**

Typologie des amphores sinopéennes. In: Kassab Tezgör 2010c, 121-140, pls. 15-20.

**Kassab Tezgör (D.) 2010b**

Le réseau commercial des amphores sinopéennes entre les II<sup>e</sup>-III<sup>e</sup> s. et le VI<sup>e</sup> s. de notre ère. In: Kassab Tezgör & Inaishvili 2010, 167-173, pls. 3-4, 98-99.

**Kassab Tezgör (D.) (ed.) 2010c**

*Les fouilles et le matériel de l'atelier amphorique de Demirci près de Sinope*. (Varia Anatolica 22). Istanbul-Paris.

**Kassab Tezgör (D.) & Akkaya (M.) 2000**

Les amphores « pseudo-Colchidiennes » du musée de Samsun. In: *AnaAnt* 8, 127-141.

**Kassab Tezgör et al. 2007**

Kassab Tezgör (D.), Kebuladze (N.), Lomitashvili (D.) & Zamtaradze (M.) Les sites de Gudava et d'Ilori (Colchide): amphores de Sinope et amphores locales de l'époque romaine. *AnaAnt* 15, 197-214.

**Kassab Tezgör (D.) & Inaishvili (N.) (eds.) 2010**

*PATABS I. Production and Trade of Amphorae in the Black Sea. Actes de la Table Ronde internationale de Batoumi-Trabzon, 27-29 Avril 2006*. (Varia Anatolica 21). Istanbul-Paris.

**Кац (В.И.) 1979**

Уточненный список магистратов, контролировавших керамическое производство в Херсонесе Таврическом. *ВДИ* 3, 127-146.

**Кац (В.И.) 1994**

*Керамические клейма Херсонеса Таврического. Каталог-определитель*. Саратов.

**Кац (В.И.) 1997**

Хронология клейм Гераклеи Понтийской (состояние и перспективы изучения). In: Охотников (С.) (ed.), *Никоний и античный мир Северного Причерноморья*. Одесса, 212-217.

**Кас (V.I.) 2003**

A New Chronology for the Ceramic Stamps of Herakleia Pontike. In: Bilde (P.G.), Højte (J.M.) & Stolba (V.F.) (eds.). *The Cauldron of Ariantas, Studies presented to A.N. Šćeglov on the occasion of his 70<sup>th</sup> birthday*. (Black Sea Studies 1). Aarhus, 261-278.

**Кац (В.И.) 2006**

Попытки ревизии абсолютной хронологии херсонесских магистратских керамических клейм. *АМА* 12, 278-294.

**Кац (В.И.) & Монахов (С.Ю.) (eds.) 1992**

*Греческие амфоры. Проблемы развития ремесла и торговли в античном мире*. Саратов.

**Кацарова (В.) 2007**

Спасителни археологически проучвания на надгробна могила № 10 на н. Колокита, гр. Созопол. *АОР през 2006*. София, 307-310.

**Кацарова (В.) & Стоянова (Д.) 2009**

Надгробна могила № 6000010 по АКБ на н. Колокита, гр. Созопол. In: Попов & Тенчова 2009, 186-210.

**Kerschner (M.) 2001**

Perspektiven der Keramikforschung in Naukratis 75 Jahre nach Elinor Price. In: Höckmann (U.) & Kreikenbom (D.) (eds.) *Naukratis. Die Beziehungen zu Ostgriechenland, Ägypten und Zypern in archaischer Zeit. Akten der Table Ronde in Mainz, 25-27 November 1999*. Möhnesse, 69-94.

**Khalvashi (M.) 2002**

მერაბ ხალვაში. კერამიკული ტარა გონიო-აფსაროსიდან. [*Ceramic containers of Gonio-Apsaros*]. (Gonio-Apsara 2). Batumi.

**Kitov (G.) 2005**

*The Valley of the Thracian Rulers*. Sofia.

**Кияшкина (П.) 1992a**

Бургаски минерални бани. *Балкански древности* 2, 15.

**Кияшкина (П.) 1992b**

Тракийското светилище при Акве Калиде – последни проучвания. *Балкански древности* 2, 76-80.

**Knigge (U.) 1976**

*Der Südhügel*. (Kerameikos 9). Berlin.

**Koehler (C.) 1981**

Corinthian Developments in the Study of Trade in the Fifth Century. *Hesperia* 50, 449-458.

**Келер (К.) 1992**

Общая хронология и типология Коринфских транспортных амфор. In: Кац & Моначов 1992, 265-283.

**Koldewey (R.) 1890**

*Die antiken Baureste der Insel Lesbos*. Berlin.

**Кострин (К.В.) 1975**

Находки остатков нефти в археологических памятниках Северного Причерноморья. *СА* 3, 206-210.

**Кръстев (К.) 2008**

Терени обхождания в землищата на селата Кошарица, Оризаре и Гюльовци, община Несебър. In: *АОР през 2007 г.* София, 784-788.

**Кръстев (К.) 2009**

*Катойкиите и емпорионите на Западнопонтийските полиси VII-I в. пр. Хр. (Въз основа на археологически и нумизматични данни)*. (Summary of PhD. diss.). София.

**Kruit (N.) & Worp (K.) 2000**

Geographical Jar Names. Towards a Multi-Disciplinary Approach. *Archiv für Papyrusforschung und verwandte Gebiete* 46, 65-146.

**Кругликова (И.Т.) 1975**

*Сельское хозяйство Боспора*. Москва.

**Kuleff et al. 1998**

Kuleff (I.), Djingova (R.) & Balabanov (P.) Archaeometric Investigation of Pottery from the Thracian Town Deultum (VI-IV C. B.C.). *Berliner Beiträge zur Archäometrie* 15, 199-236.

**Kuleff et al. 2007**

Kuleff (I.), Stoyanov (T.) & Pernicka (E.) On the Origin of Stamped Amphorae from Thrace (Bulgaria). *OJA* 26 (1), 53-78.

**Кутайсов (В.А.) 2004**

*Керкинитида в античную эпоху*. Киев.

**Kuzmanov (G.) 1974**

Ранновизантийски керамичен комплекс от крепостта Овеч. *ИНМВ*, 10 (25), 312-316.

**Кузманов (Г.) 1985**

*Ранновизантийска керамика от Тракия и Дакия (IV – началото на VII век)*. (Разкопки и проучвания 13). София.

**Kuzmanov (G.) 1992**

Die locale Gefäßkeramik. In: Uenze (S.) (ed.). *Die spätantiken Befestigungen von Sadovec (Bulgarien)* (Münchener Beiträge zur Vor- und Frühgeschichte 43). München, 201-220.

**Labarre (G.) 1996**

*Les cités de Lesbos aux époques hellénistique et impériale* (Collection de l'Institut d'Archéologie et d'Histoire de l'Antiquité). Paris.

**Lamb (W.) 1931-1932**

Antissa. *ABSA* 32, 41-67.

**Lamb (W.) 1932**

Grey Wares from Lesbos. *JHS* 52, 1-12.

**Lambrino (M.F.) 1938**

*Les vases archaïques d'Istros*. Bucuresti.

**Lawall (M.L.) 1995**

*Transport Amphoras and Trademarks: Imports to Athens and Economic Diversity in the Fifth Century B.C.* (PhD. diss. University of Michigan).

**Lawall (M.L.) 1998**

Ceramics and Positivism Revisited: Greek Transport Amphoras and History. In: Parkins (H.) & Smith (C.) (eds.) *Trade, Traders and the Greek City*. London, 75-101.

**Lawall (M.L.) 1999**

Studies in Hellenistic Iliion: Transport Amphoras from the Lower City. *Studia Troica* 9, 187-224.

**Lawall (M.L.) 2002**

Iliion before Alexander: Amphoras and Economic Archaeology. *Studia Troica* 12, 197-244.

**Lawall (M.L.) 2004**

Amphoras Without Stamps: Chronologies and Typologies from the Athenian Agora. In: *ΣΤ' Επιστημονική Συνάντηση για την Ελληνιστική Κεραμική – Βόλος 17-23 Απριλίου 2000*. Αθήνα, 445-454.

**Lawall (M.L.) forthcoming**

Early Hellenistic Amphoras from two Closed Contexts: Kerynia Shipwreck and Ephesos well LB. In: *7<sup>th</sup> Scientific Meeting on Hellenistic Pottery, Aigion, Greece, April 3-9 2005*. Athens.

**Lawall (M.L.) & Jawando (A.) 2004**

Amphoras as Paint Pots? *Hesperia* 71, 416-419.

**Lazarenko et al. 2010**

Lazarenko (I.), Mircheva (E.), Gospodinova (R.) & Sharankov (N.) The Temple of the Pontic Mother of Gods at Dionysopolis. In: Petropoulos (E.K.) & Maslennikov (A.A.) (eds.) *Ancient Sacral Monuments in the Black Sea*. Thessaloniki, 13-62.

**Лазаров (М.) 1973**

Античните амфори (VI-I в.пр.н.е.) от Българското Черноморие. *ИНМВ* 9(24), 3-52.

**Лазаров (М.) 1974**

Амфорни печати от Одесос. *ИНМВ* 11 (25), 19-58

**Lazarov (M.) 1978**

Amphores et timbres amphorique d'Heraclée Pontique trouves à Apollonie. In: *Studia in honorem Veselini Beševliev*. Sofia, 299-309.

**Лазаров (М.) 1980**

Разпространението на хераклеиските амфори и печати в Тракия, *ИНМВ* 16 (31), 5-21.

**Lazarov (M.) 1980**

Timbres amphoriques de Nessèbre. In: *Nessèbre II*. Sofia, 156-185.

**Лазаров (М.) 1982**

Търговията на Хиос със западнопонтийските градове. *ИНМВ* 18 (33), 5-15, pl. I.1.

**Lazarov (M.) 1985**

Odessos – une ville antique sur le littoral thrace du Pont Euxin. In: *Le pouvoir central et les ville de l'Europe de l'Est et de Sud-Est du XV siècle aux début de la révolution indutrieelle*. Sofia, 63-72.

**Lazarov (M.) 1986**

Les timbres amphoriques grecs et les problèmes commerciaux en Thrace pontique In: *Empereur & Garlan* 1986, 401-405.

**Lazarov (M.) 1999**

Les importations amphoriques thasiennes à Odessos. In: *Garlan* 1999a, 195-200.

**Леви (Е.И.) 1964**

Итоги раскопок ольвийского теменоса и агоры: 1951-1960 гг. In: *Ольвия. Теменос и Агора*. Москва, 5-26.

**Лейпунская (Н.А.) 1981**

*Керамическая тара из Ольвии. Киев*.

**Lejpunskaja (N.) 2010**

Hellenistic Amphora from Olbia Pontica. In: Kassab Tezgör & Inaishvili 2010, 63-68, pls. 35-36.

**Lestakov (K.) 1995**

Bronze Age Graves at Debelt, Bourgas region. In: *Trans Europam – Festschrift für M. Primas*. Zurich, 39-44.

**Лихардус et al. 2001**

Лихардус (Я.), Фол (А.), Гетов (Л.), Бертемес (Ф.), Ехт (Р.), Катинчаров (Р.) & Илиев (И.) *Изследвания в микрорегиона на с. Драма 1983-1999 г.* София.

**Лимберис (Н.Ю.) & Марченко (И.И.) 2005**

Хронология керамических комплексов с античными импортами из раскопок меотских могильников правобережья Кубани. In: *Материалы и исследования по археологии Кубани 5*, 219-325.

**Лозанов (И.) & Стоянова (Д.) forthcoming**

Керемиди с енглифични печати от Месамбрия Понтика. In: Йотов (В.) & Лазаренко (И.) (eds.) *Acta Musei Varnaensis* 8. Varna.

**Lund (J.) & Gabrielsen (V.) 2005**

A Fishy Business. Transport Amphorae of the Black Sea Region as a Source for the Trade in Fish and Fish Products in the Classical and Hellenistic Periods. In: Bekker-Nielsen (T.) (ed.) *Ancient Fishing and Fish Processing in the Black Sea Region*. Aarhus, 161-170.

**Lund (J.) 1999**

Rhodian Amphorae in Rhodes and Alexandria as Evidence of Trade. In: Gabrielsen (V.), Bilde (P.), Engberg-Pedersen (T.), Hannestad (L.) & Zahle (J.) (eds.) *Hellenistic Rhodes. Politics, Culture, and Society* (Studies in Hellenistic Civilization 9). Aarhus, 187-204.

**Lund (J.) 2004**

Oil on the waters? Reflections on the Contents of Hellenistic Transport Amphorae from the Aegean. In: Eiring & Lund 2004, 211-216.

**Lungu (V.) 2000**

Pratiques funéraires et formes d'organisation sociale dans la nécropole de la cité grecque d'Orgamé. In: *Tombes tumulaires de l'Age du Fer dans le Sud-Est de l'Europe. Actes du II<sup>e</sup> Colloque International d'Archéologie Funéraire*. Tulcea, 101-117.

**Macalister (R.A.S.) 1901**

Amphora Handles with Greek Stamps from Tell Sandahannah. *Palestine Exploration Fund Quarterly Statement* 33, 25-43, 124-144, 394-397.

**Mackensen (M.) 1993**

*Die Sigilata und Lampentöpfereien von El Machrine (Nord Tunesien)*. (Müchener Beiträge für Vor- und Frühgeschichte 50). München.

**Maiuri (A.) 1922**

Una fabbrica di anfore rodie. *Annuario della Regia Scuola Archeologica di Atene* 4-5 (1924), 249-269.

**Максименко (В.Е.) 1983**

*Савроматы и сарматы на Нижнем Дону*. Ростов-на-Дону.

**Mateevici (N.) 2007**

*Amforele grecești în mediul barbar din nord-vestul Pontului Euxin în sec. VI – începutul sec. II a. Chr.* Chișinău.

**Mattingly (D.J.) 1988a**

The Olive Boom. Oil Supplies, Wealth, and Power in Roman Tripolitania. *LibStud* 19, 21-41.

**Mattingly (D.J.) 1988b**

Oil for Export: A Comparative Study of Roman Olive Oil Production in Libya, Spain, and Tunisia. *Journal of Roman Archaeology* 1, 33-56.

**Mayerson (P.) 1992**

The Gaza Wine Jar (Gazition) and the Lost Ashkelon jar (Askalônion). *IEJ* 42, 76-80.

**Mayerson (P.) 1997**

A Note on κοῦφα "Empties". *BASP* 34, 47-52.

**Мазников et al. 1972**

Мазников (З.), Иванов (Ц.), Симеонов (А.), Петрова (А.), Михайлова (Л.), Петрунов (Б.) & Костов (Х.) *Доклад върху геологията на част от Хисарско-Бакаджишкия праг и Айтооска планина*. Геофонд 4, 266.

**Megaw (A.H.S.) 1982**

*Saranda kolones 1981. Report of the department of Antiquities*. Сургус.

**Михайлов (Й.) 2008**

Теренно издирване на археологически обекти в землищата на селата Бата, Габерово, Медово, Порой, Александрово, община Поморие. In: *АОР през 2007 г.* София, 788-789.

**Михайлов (С.) 1955**

Археологически материали от Плиска (1948-1951). *ИАИ* 20, 49-182.

**Миков (Р.) 2007**

Спасително проучване на надгробна могила № 9 от некропола на н. Колокита. *АОР през 2006 г.*, София, 341-344.

**Миков (Р.) & Стоянова (Д.) 2010**

Строителна керамика от могила № 9, нос Колокита, Апология Понтика. In: *Югоизточна България през II-I хилядолетие пр. Хр.* Варна, 232-240.

**Минчев (А.) 1972**

Амфори от IV-VI в. във Варненския музей. *ИНМВ* 8 (23), 273-286.

**Минчев (А.) 1976**

Късноантична вносна керамика във Варненския музей. *ИНМВ* 12 (27), 118-122.

**Минчев (А.) 1983**

За керамичното производство в Одесос (I-VII в.). *ИНМВ* 19 (34), 5-18.

**Minchev (A.) 1983**

The Late Roman Fine Ware Import to the Western Black Sea Coast. In: Poulter (A.G.) (ed.) *Ancient Bulgaria II*. Nottingham, 194-201.

**Minčev (A.) 1986**

Die westliche Schwarzmeerküste in der Spätantike: Ethnokulturelle- und handelsbeziehungen. In: Pillinger (R.) (ed.) *Spätantike und frühbyzantinische Kultur Bulgariens zwischen Orient und Okzident*. Wien, 105-113.

**Минчев (А.) 1992**

Ранновизантийски глинени ампули от Одесос. *ИНМВ* 28 (43), 127-136.

**Minchev (A.) 2003**

Odessos (6<sup>th</sup> century BC to early 1<sup>st</sup> century AD). In: Grammenos & Petropoulos 2003, 209-278.

**Minchev (A.) 2006**

Odessos et sa region dans l'Antiquité tardive (IV<sup>e</sup>-VI<sup>e</sup> siècle). In: *Des Thraces aux Ottomans. La Bulgarie à travers les collections des musées de Varna*. Montpellier, 181-187.

**Mintschev (A.) 1985**

Das frühe Christentum in Odessos und seine Territorium. In: Schuller (W.) (ed.) *Die bulgarische Schwarzmeerküste im Altertum*. Kostanz, 51-65.

**Минчев (А.) 2007**

Одесос през късната античност (IV – началото на VII в.). In: *10 книги за Варна*. Варна, 11-114.

**Мирчев (М.) 1953**

Разкопки на тракийското селище край с. Галата. *ИВАД* 9, 1-28.

**Мирчев (М.) 1956**

Сбирката от теракоти в музея на гр. Варна. *ИВАД* 10, 1-50.

**Мирчев (М.) 1958**

*Амфорните печати от музея във Варна*. (Епиграфска поредица 4). София.

**Момчилов et al. (eds.) 2009**

Момчилов (Д.), Георгиева (Р.), Христова (Р.), Статева (Й.), Иванова (Ж.) & Чакърова (Н.) (eds.) *Спасителни археологически проучвания по трасето на АМ „Тракия“, лот 5, обходен път на град Карнобат, км 6+400-6+800*. Варна.

**Монахов (С.Ю.) 1989**

*Амфоры Херсонеса Таврического*. Саратов.

**Монахов (С.Ю.) & Рогов (Е.Я.) 1990**

Амфоры некрополя Панское I. *АМА* 7, 128-153.

**Monachov (S.J.) 1993**

Les amphores de Sinope. *AnaAnt* 2, 107-132.

**Монахов (С.Ю.) 1999**

*Греческие амфоры в Причерноморье. Комплексы керамической тары*. Саратов.

**Монахов (С.Ю.) 2003**

*Греческие амфоры в Причерноморье. Типология амфор ведущих центров-экспортеров товаров в керамической таре. Каталог-определитель*. Москва-Саратов.

**Monachov (S.Y.) 2010**

New Series of Amphorae from Southern Pontic Poleis 4<sup>th</sup> – First Third of the 3<sup>rd</sup> Centuries B.C. In: Kassab Tezgör & Inaishvili 2010, 23-27, pls. 12-13.

**Monaco (M.C.) 2000**

*Ergasteria. Impianti artigianali ceramici ad Atene ed in Attica dal protogeometrico alle soglie dell'ellenismo*. Roma.

**Μπλακίτζής (X.) 1989**

*Βυζαντινά τσουκαλολάγυνα*. Αθήνα.

**Muşeţeanu et al. 1978**

Muşeţeanu (C.), Conovici (N.) & Atanasiu (A.) Contribution au problème de l'importation des amphores grecques dans le Sud-Est de Munténie. *Dacia* 22, 173-199.

**Nankov (E.) 2008**

The Fortifications of the Early Hellenistic Thracian City of Seuthopolis: Breaking the Mold. *Archaeologia Bulgarica* 12 (3), 15-56.

**Недев (Д.) 2008**

Спасителни археологически проучвания в старата част на гр. Созопол (УПИ 226, КВ. 18, УПИ XI-XII – 515, КВВ 27). In: *АОР през 2007 г.* София, 312-313.

**Nedev (D.) & Panayotova (K.) 2003**

Apollonia Pontica (End of the 7<sup>th</sup>-1<sup>st</sup> Centuries B.C.). In: Grammenos & Petropoulos 2003, 95-155.

**Newton (C.T.) 1865**

*Travels and discoveries in the Levant*. London.

**Ognenova-Marinova (L.) 1979**

Mesembria Pontica. *Wiadomości Archeologiczne* 44, 34-40.

**Ognenova-Marinova (L.) 1980**

Tuiles et terres cuites architecturales. In: *Nessèbre II*. Sofia, 110-155.

**Онайко (Н.А.) 1970**

*Античный импорт в Приднепровье и Побужье в IV-II вв. до н.э.* (Свод археологических источников Д1-27). Москва.

**Ораїт (А.) 1980**

Consideratii preliminare asupra amforelor romane si romano-bizantine din Dobrogea. *Peuce* 8, 291-327.

**Ораїт (А.) 1991**

Ceramica. In: Ţpait et al. Fortificatia si asezarea romana tîrzie de la Babadag-Topraichioi. *Peuce* 10 (1), 211-260; 10(2), 227-268, pls. 11-50.

**Ораїт (А.) 1996**

*Aspecte ale vieţii economice din provincia Scythia (secolele IV-VI p.Ch). Producţia ceramicii locale şi de import*. (Bibliotheca Thracologica 16). Bucarest.

**Ораиџ (А.) 2004a**

*Local and Imported Ceramics in the Roman Province of Scythia (4<sup>th</sup>-6<sup>th</sup> centuries AD)*. (BAR International Series 1274). Oxford.

**Ораиџ (А.) 2004b**

The Eastern Mediterranean Amphorae in the Province of Scythia. In: Eiring & Lund 2004, 293-308.

**Орперманн (М.) 2000**

Überlegungen zur Datierung hellenistischer Grabreliefs aus Mesambria. In: *Studia in memoriam Velizari Velkov*. (Thracia 13). Sofia, 331-344.

**Орперманн (М.) 2004**

*Die westpontischen Poleis und ihr indigenes Umfeld in vorrömischer Zeit*. Langenweissbach.

**Özyigit (Ö.) 1994**

The City Walls of Phokaia. *REA* 96, 77-109.

**Панайотова (К.) 1998**

Некрополът на Аполония Понтика в местността Калфата, *Археология* 3-4, 11-24.

**Ранайотова (К.) 2008**

The Necropolis of Apollonia Pontica in the Kalfata/Budjaka Locality. In: Docter et al. 2008, 5-28.

**Панайотова et al. 2004**

Панайотова (Кр.), Недев (Д.) & Ермари (А.) Българо-френски проучвания на античния некропол на Аполония в м. Калфата през 2003 г. In: *АОР през 2003 г.* София, 152-154.

**Панайотова et al. 2006**

Панайотова (Кр.), Недев (Д.), Ников (Кр.) & Гюзелев (М.) Спасителни проучвания на некропола на Аполония. In: *АОР през 2005 г.* София, 242-246.

**Панайотова et al. 2010**

Панайотова (Кр.), Даскалов (М.), Пенчева (Р.) & Трендафилова (К.) Спасителни археологически проучвания на о. Св. Кирик. In: *АОР през 2009 г.* София, 295-298.

**Панайотова (Кр.) & Дражева (Ц.) 2003**

Аполония Понтика-Созополис. In: Иванов (Р.) (ed.) *Римски и ранновизантийски селища в България*. София, 215-234.

**Панас (Ch.) & Pontes (H.) 1998**

Stamped Amphora and Lagynos Handles from Troia from the 1989-1995 Seasons. *Studia Troica* 8, 223-262.

**Папанова (В.А.) 1993**

*Некрополът Олъвиш*. Бердянск.

**Пападопулос (А.Ј.) 1989**

*Roman Amphorae from the Excavations at Torone*. (Arheologiki Ephimeris 128). 67-103.

**Папус (G.) 1973**

Ceramica romană târzie cu décor stampilat descoperită la Edificiul Roman cu Mosaic din Tomis. *Pontica* 6, 153-190.

**Parker (A.) 1992**

*Ancient Shipwrecks of the Mediterranean and the Roman Provinces*. (BAR International Series 580). Oxford.

**Peacock (D.P.S.) 1982**

*Pottery in the Roman World: an Ethnoarchaeological Approach*. London.

**Peacock (D.P.S.) & Williams (D.) 1986**

*Amphorae and the Roman Economy*. London.

**Реџа, (Ј.Т.) 2007**

*Roman Pottery in the Archaeological Record*. Cambridge.

**Petrie (W.M.F.) 1886**

*Naucratis I*. London.

**Петрова et al. 1994a**

Петрова (А.), Михайлова (Л.) & Василева (В.) *Обяснителна записка към геоложка карта на България в М 1: 100 000. Картен лист Бургас*. София.

**Петрова et al. 1994b**

Петрова (А.), Михайлова (Л.) & Василева (В.) *Обяснителна записка към геоложка карта на България в М 1: 100 000. Картен лист Поморие*. София.

**Petropoulos (E.K.) 2005**

*Hellenic Colonization in Euxeinus Pontos. Penetration, Early Establishment and the Problem of the "Emporion" Revised* (BAR International Series 1394). Oxford.

**Pieri (D.) 2005**

*Le commerce du vin oriental à l'époque Byzantine (V<sup>e</sup>-VII<sup>e</sup> siècles). Le témoignage des amphores en Gaule*. (Bibliothèque archéologique et historique 174). Beyrouth.

**Попов (Хр.) & Тенчова (А.) (eds.) 2009**

*Сборник в памет на професор Велизар Велков*. София.

**Popović (M.) 1989**

Importation et production locale de céramique à Ras (fin du XI<sup>e</sup> – début du XIII<sup>e</sup> siècle). In: Déroche & Spieser 1989, 119-130.

**Preda (C.) 1961**

Archaeological Discoveries in the Greek Cemetery of Callatis (IV-III Centuries before Our Era). *Dacia* NS 5, 275-303.

**Preshlenov (H.) 2003**

Mesambria. In: Gramenos (D.V.) & Petropoulos (E.K.) (eds.) *Ancient Greek Colonies in the Black Sea 1*. (BAR International Series 1675 (1)). Thessaloniki.

**Придик (Е.М.) 1917**

*Инвентарны каталог клейм на амфорных ручках и горлах и на черепицах Эрмитажно-го собрания*. Петроград.

**Rădulescu (A.) 1973**

Amfore cu inscripții de la Edificiul Roman cu Mosaic din Tomis. *Pontica* 6, 193-206.

**Rathbone (D.) 2002**

The Ancient Economy and Greco-Roman Egypt. In: Scheidel & Reden 2002, 155-172.

**Reho (M.) 1990**

*La ceramica Attica a figure nere e rosse nella Tracia Bulgara*. (Archaeologica 86). Roma.

**Riley (J.A.) 1979**

The Coarse Pottery from Benghazi. In: Lloyd (J.A.) (ed.). *Sidi Kherbish Excavations in Benghazi (Berenice) II*. Tripoli, 91-467.

**Robinson (H.S.) 1959**

*Pottery of the Roman Period*. (The Athenian Agora 5). Princeton, New Jersey.

**Roberts (S.R.) 1986**

The Stoa Gutter Well. A Late Archaic Deposit in the Athenian Agora. *Hesperia* 55, 1-74.

**Roebuck (C.) 1940**

Pottery from the North Slope of the Acropolis. *Hesperia* 9, 141-260.

**Рубан (В.В.) 1980**

О датировке Ягорлыкского поселения. In: *Исследования по античной археологии Северного Причерноморья*. Киев, 104-114.

**Рубан (В.В.) 1990**

О хронологии красноглиняных амфор с коническими ножками, VII-V вв. до н.э. *КСИА* 197, 12-19.

**Савченко (Е.И.) 2001**

Могильник скифского времени «Терновое I – Колбино I» на Среднем Дону (погребальный обряд). In: *Археология Среднего Дона в скифскую эпоху. Труды Потуданской археологической экспедиции ИА РАН, 1993-2000 гг*. Москва, 53-143.

**Salviat (Fr.) 1986**

Le vin de Thasos. Amphores, vin et sources écrites. In: Empereur & Garlan 1986, 146-196.



**Sanders (G.D.R.) 1993**

Excavations at Sparta: The Roman Stoa 1988-91. Preliminary Report, Part 1. *ABSA* 88, 251-286.

**Sauciuc Săveanu (Th.) 1924**

Callatis. I<sup>er</sup> rapport préliminaire. Fouilles et recherches de l'année 1924. *Dacia* 1, 108-165.

**Сазанов (А.В.) 1989**

О хронологии Боспора ранневизантийского времени. *СА* 4, 41-60.

**Sazanov (A.) 1997**

Les amphores de l'Antiquité tardive et du Moyen-Age: continuité ou rupture? Le cas de la mer Noire. In: Démians d'Archimbaud (G.) (dir.) *La Céramique médiévale en Méditerranée, Actes du VI<sup>e</sup> Congrès de l'AIECM2, Aix-en-Provence (13-18 novembre 1995)*. Aix-en-Provence, 87-95.

**Sezgin (Y.) 2004**

Clazomenian Transport Amphorae of the Seventh and Sixth Centuries. In: *Klazomenai, Teos and Abdera: Metropoleis and Colony. Proceedings of the International Symposium Held at the Archaeological Museum of Abdera*. Thessaloniki, 169-183.

**Sciallano (M.) & Sibella (P.) 1991**

*Amphores. Comment les identifier*. Edisud.

**Scorpan (C.) 1975**

Ceramica romano-bizantină de la Sacidava. *Pontica* 8, 263-313.

**Scorpan (C.) 1977**

Contribution à la connaissance de certains types céramiques romano-byzantins (IV<sup>e</sup>-VII<sup>e</sup> siècles) dans l'espace istro-pontique, *Dacia* 21, 269-297.

**Schaus (G.P.) 1992**

Archaic Imported Fine Wares from the Acropolis, Mytilene. *Hesperia* 61 (3), 355-374.

**Schefold (K.) 1934**

*Untersuchungen zu den Kertscher Vasen*. Berlin-Leipzig.

**Scheidel (W.) & von Reden (S.) (eds.) 2002**

*The Ancient Economy*. New York.

**Seifert (M.) 2004**

*Herkunftsbestimmung archaischer Keramik am Beispiel von Amphoren aus Milet*. (BAR International Series 1233). Oxford.

**Şenol (G.C.) 2006**

*Klasik ve hellenistik dönem'de mühürlü amphora üreten merkezler ve mühürleme sistemleri*. Istanbul.

**Seure (G.) 1924**

Archeologie Thrace. Documents inédites ou peu connus *RA* 19, 307-350.

**Шелов (Д.Б.) 1956**

*Монетное дело Боспора VI-II вв. до н.э.* Москва.

**Шкорпиль (К.) 1937**

Печати върху амфори отъ Черноморското Крайбрежие. *ИБАИ* 8, 24-43.

**Щеглов (А.Н.) & Селиванова (Н.Б.) 1992**

Оптико-петрографическое исследование причерноморских клейменных амфор IV-III вв. до н. э. In: Кац & Монахов 1992, 32-50.

**Смирнов (К.Ф.) 1984**

*Сарматы и утверждение их политического господства в Скифии*. Москва.

**Sparkes (B.A.) & Talcott (L.) 1974**

*Black and Plain Pottery of the 6<sup>th</sup>, 5<sup>th</sup> and 4<sup>th</sup> Centuries B.C.* (The Athenian Agora 12). Princeton, New Jersey.

**Spencer (N.) 1995**

Early Lesbos between East and West: a 'Grey Area' of Aegean Archaeology. *ABSA* 90, 269-306.

**Spencer (N.) 2001**

Exchange and Stasis in Archaic Mytilene. In: Brock (R.) & Hodkinson (S.) (eds.) *Alternatives to Athens. Varieties of Political Organization and Community in Ancient Greece*. Oxford, 68-81.

**Стойнов et al. 1956**

Стойнов (С.), Кулаксъзов (Г.), Чаталов (Г.) & Петкова (В.) *Доклад върху геоложките проучвания на Югоизточна Странджа и областта западно от Бургас, извършени през 1955 г.* Геофонд 4, 45.

**Stoyanov (T.) 2000**

Reflections on the “Parmeniscos’ Group”. In: *Studia in memoriam Velizari Velkov.* (Thracia 13). Sofia, 409-415.

**Stoyanov (T.) 2003**

The Parmeniskos Amphora Group – New Data and Reflections on Production Centres and Chronology. *Archaeologia Bulgarica* 7 (1), 35-43.

**Stoyanov (T.) forthcoming**

The Parmeniskos Group: New Issues from Thrace. Amphorae Production in Early Hellenistic Mesambria Pontica (Paper Presented at the International Congress *Analyse et exploitation des timbres amphoriques grecs.* Athens, February 3-5, 2010).

**Stoyanov et al. forthcoming**

Stoyanov (T.), Mihaylova (Zh.), Nikov (K.), Nikolaeva (M.), Stoyanova (D.), Bonev (V.), Madzharov (K.) City Planning, Fortification System, Architecture. In: *The Thracian City. Sbornyano III.* Sofia.

**Stoyanov (T.) & Stoyanova (D.) forthcoming**

Early Tombs of Thrace – Questions of the Chronology and the Cultural Context. In: *Tumulus as Sema.* International Conference on Space, Politics, Culture and Religion in the First Millennium BC. Istanbul, 1-3 June 2009.

**Стоянова (Д.) 2008**

Строителна керамика и архитектурна теракота от Одесос. In: Лазаренко (И.) (ed.) *Нумизматични, сфрагистични и епиграфски приноси към историята на черноморското крайбрежие. Международна конференция в памет на ст.н.с. Милко Мирчев, Варна, 15-17 септември 2005 г.* (Acta Musei Varnaensis 7.2). 215-246.

**Stoyanova (D.) forthcoming a**

Two Hellenistic friezes with bukrania from Mesambria Pontica. In: *Gods and Humans. International Conference of Archaeology. Varna, 18-20 September, 2008.* (Acta Musei Varnaensis 9). Varna.

**Stoyanova (D.) forthcoming b**

The Import of Roof Tiles from Sinope and Heraclea Pontica in the Western Black Sea Area. In: *Sinope. The results of Fifteen Years of Researches. 7<sup>th</sup>-9<sup>th</sup> May 2009.* Sinop.

**Stoyanova (D.) forthcoming c**

Roof-tiles. In: Stoyanov (T.) (ed.) In: *The Thracian City. Sbornyano III.* Sofia.

**Swan (V.S.) 2004**

Dichin (Bulgaria) and the Supply of Amphorae to the Lower Danube in the Late Roman – Early Byzantine Period. In: Eiring & Lund 2004, 371-380.

**Сымонович (Э.А.) 1971**

Находка позднеантичной амфоры из Курский области. *СА* 4, 231-232.

**Tafrali (O.) 1927**

La cité pontique de Callatis. Recherches et fouilles. *ArtArh* 1 (1), 17-55.

**Tchernia (A.) 1990**

*Le vin des Romains. Le vin des historiens.* Suze-la-Rousse.

**Θεοχαρίδου (Κ.) 1994**

*Η αρχιτεκτονική του ναού της Αγίας Σοφίας στη Θεσσαλονίκη.* Αθήνα.

**Tomber (R.) 1999**

Pottery from the Sediments of the Inner Harbour (area I14). In: Holum (K.G.), Raban (A.) & Patrich (J.) (eds.) *Herod's Temple, the Provincial Governor's Praetorium and Granaries, the Later Harbor, a Gold Coin Hoard and Others Studies.* (Caesarea Papers 2), 297-322.

**Тончева (Г.) 1951**

Разкопките на Петте могили край с. Галата. *ИВАД* 8, 49-64.

**Тончева (Г.) 1964**

*Потънали пристанища*. Варна.

**Тончева (Г.) 1965**

Разкопки в Марцианопол през 1955 г. *ИНМВ* 1 (16), 71-78.

**Тончева (Г.) 1967**

Архаични материали от Одесос. *ИАИ* 30, 158-179.

**Тончева (Г.) 1974**

Некрополът край светилището на Херос Карабазмос в Одесос. *ИНМВ* 10 (25), 287-302.

**Tonkova (M.) 1997**

Hellenistic Jewellery from the Colonies on the West Black Sea Coast. *Archaeology in Bulgaria* 1, 83-102.

**Topoleanu (R.) 2000**

*Ceramica romana și romano-bizantină de la Halmyris (se. I-VII d. Ch.)*. Tulcea.

**Tudor (D.) 1965**

*Sucidava, une cité daco-romaine et byzantine en Dacie*. (Latomus 80).

**Туровский et al. 2001**

Туровский (Е.Я.), Николаенко (М.Ю.), Горячук (В.Н.) & Ладюков (И.В.) *Древние амфоры в Северном Причерноморье: Справочник-определитель*. Киев.

**Цехмистренко (В.И.) 1967**

Заметки о синопских клеймах. *СА* 3, 256-261.

**Tsetskhladze (G.R.) 1990**

Organization of Ceramic Production in Colchis during the Hellenistic Period. *Eirene* 27, 93-102.

**Tsetakhladze (G.R.) & Vnukov (S.Y.) 1992**

Colchean Amphorae: Typology, Chronology and Aspects of Production. *ABSA* 87, 357-386.

**Tzaneva (M.) 1985**

Thrakisches Hügelgrab bei Kolokita. *Thracia Pontica* 2, 352-359.

**Zaneva (M.) 1986**

Die Thraker und Apollonia nach den Vorschungen der Hügelgrabmäler. *Thracia Pontica* 3, 166-173.

**Цанева (М.) 1987**

*Траки на морския бряг*. (Алманах „Море“ 1). 359-364.

**Tzochev (Ch.) 2007**

Black Sea Transport Amphorae. In: Bouzek (J.), Domaradzka (L.), Archibald (Z.H.) (eds.). *Pistiros III. Excavation and Studies*. Prague, 187-189.

**Tzochev (Ch.) 2009**

Notes on the Thasian Amphora Stamps Chronology. *Archaeologia Bulgarica* 13 (1), 55-72.

**Цочев (Ч.) 2009**

Транспортни амфори. In: Момчилов et al. 2009, 124-148. Сборник в памет на Ст. Дамянов.

**Tzochev (Ch.) 2010**

Between the Black Sea and the Aegean: The Diffusion of Greek Trade-Amphorae in Southern Thrace. In: Kassab Tezgör & Inaishvili 2010, 97-101, pls. 55-60.

**Цочев (Ч.) forthcoming**

Архаични транспортни амфори от Костадин чешма.

**Улитин (В.В.) 2005**

Амфорный импорт в Усть-Лабинской меотской группе памятников (по материалам грунтовых могильников правобережья Кубани). In: Марченко (И.И.) (ed.) *Четвертая Кубанская археологическая конференция: Тезисы и доклады*. Краснодар, 275-278.

**Улитин (В.В.) 2006**

*Торговые связи племен Прикубанья с античным миром в конце VII – первой половине I в. до н.э. (по данным амфорной тары).* (Unpublished PhD. diss.). Санкт-Петербург.

**Uthli (Fr.) 2002**

Graue Keramik aus Pyrra auf Lesbos im Archäologischen Institut Göttingen. AA 1, 135-159.

**Vallauri et al. 2003**

Vallauri (L.), Démians (G.), d'Archimbaud (F.), Parent & Richarté (C.) La circulation des céramiques byzantines, chypriotes et du levant chrétien en Provence, Languedoc et Corse du X<sup>e</sup> au XIV<sup>e</sup> siècle. In: *VII<sup>e</sup> Congrès International sur la Céramique Médiévale en Méditerranée, Actes.* Athènes, 137-152.

**Vanderpool (E.) 1938**

The Rectangular Rock-Cut Shaft. *Hesperia* 7, 361-411.

**Vanderpool et al. 1962**

Vanderpool (E.), McCredie (J.R.) & Steinberg (A.) Koroni, a Ptolemaic Camp on the Eastern Coast of Attica. *Hesperia* 31, 48-51, pls. 18-19.

**Vanderpool et al. 1964**

Vanderpool (E.), McCredie (J.R.) & Steinberg (A.) Koroni: the Date of the Camp and the Pottery. *Hesperia* 33, 69-75.

**Van der Werff (J.) 1989**

Sekundäre Graffiti auf römische Amphoren. *AK* 19 (4), 361-376.

**Van Doorninck Jr. (F.H.) 1989**

The Cargo Amphoras of the 7<sup>th</sup> century Yassi Ada and the 11<sup>th</sup> century Serçe Limani Shipwreck: Two Examples of a Reuse of Byzantine Amphoras as Transport Jars. In: Déroche & Spieser 1989, 247-257.

**Velkov (V.) & Domaradska (L.) 1994**

Kotys I (383/2-359) et l'emporion de Pistiros en Thrace. *BCH* 118, 1-15.

**Venedikov (I.) 1980**

Trois reliefs surprenants de Mesambria. In: *Nessèbre II.* Sofia, 81-95.

**Vidal-Naquet (P.) 1981**

*Le chasseur noir: formes de pensée et formes de société dans le monde grec.* Paris.

**Виноградов (Ю.Г.) 1972**

Керамические клейма острова Фасос, НЭ 10, 3-63.

**Виноградов (Ю.Г.) 1995**

Понт Евксинский как политическое, экономическое и культурное единство и эпиграфика. In: *Античные полисы и местное население Причерноморья. Материалы международной научной конференции «Междуполисные взаимоотношения в Причерноморье в доримскую эпоху. Экономика, политика, культура».* Севастополь, 5-56.

**Внуков (С.Ю.) 1992**

К вопросу о центре производства коричневоглиняных амфор Северного Причерноморья. In: Кац & Монахов 1992, 68-89.

**Внуков (С.Ю.) 2003**

*Причерноморские амфоры I в. до н.э. – II в. н.э. (морфология).* Москва.

**Vnukov (S.Yu.) 2004**

Pan-Roman Amphora Types Produced in the Black Sea Region. In Eiring & Lund 2004, 407-415.

**Внуков (С.Ю.) 2006**

*Причерноморские амфоры I в. до н.э. – II в. н.э. Часть II (петрография, хронология, проблемы торговли).* Санкт-Петербург.

**Vnukov (S.Yu.) 2010**

Problems of "Brown Clay" (Colchian) Amphora Studies. Typology, Chronology, Production Centers, Distribution. In: Kassab Tezgör & Inaishvili 2010, 29-32, pls. 6, 1-4, 14-16.

**Wallace Matheson (P.M.) &**

**Wallace (M.B.) 1982**

Some Rhodian Amphora Capacities. *Hesperia* 51, 293-320.

**Whitbread (K.) 1995**

*Greek Transport Amphorae. A Petrological and Archaeological Study.* (Fitch Laboratory Occasional paper 4). Athens.

**Wilkins (J.) 2000**

*The Boastful Chef.* Oxford.

**Williams (C.) & Williams (H.) 1991**

Excavations at Mytilene 1990. *Echos du Monde Classique* 35 (10), 175-191.

**Wittenburg (A.) 1983**

Olivenbau im Zenon-Archiv. In: Martinez (B.) & Remesal Rodriguez (J.M.) (eds.) *Producción y comercio del aceite en la Antigüedad. Segundo congreso internacional (Sevilla, 24-28 Febrero 1982).* Madrid, 501-514.

**Якобсон (А.Л.) 1951**

Средневековые амфоры Северного Причерноморья. *СА* 15, 323-344.

**Яковенко (Э.В.) 1964**

Античні амфори, знайдені на Київщині. *Археологія* 16, 198-203.

**Young (R.) 1951**

Sepulturae intra urbem, *Hesperia* 20, 67-134.

**Зеест (И.Б.) 1960**

*Керамическая тара Боснора.* МИА 83. Москва.

**Zimmermann (K.) 1994**

Traufziegel mit Reliefmāander aus dem Schwarzmeergebiet. In: Winter (N.A.) (ed.) *Proceedings of the International Conference on Greek Architectural Terracottas of the Classical and Hellenistic Periods, December 12-15, 1991.* (Hesperia Supplements 27), 221-251, 421.

**Zimmerman Munn (M.L.) 2003**

Corinthian Trade with the Punic West in the Classical Period. In: Williams (C.K.) & Bookidis (N.) (eds.) *Corinth, the Centenary 1896-1996.* (Corinth, Results of Excavations Conducted by the American School of Classical Studies 20). Athens, 195-218.

**Zlateva et al. 2007**

Zlateva (B.), Kuleff (I.) & Djingova (R.) Chemical Composition of the Resin Residue Found in Ancient Greek Amphora. In: Vagalinski (L.F.) (ed.) *The Lower Danube in Antiquity: VI century BC – VI century AD.* Sofia, 55-58.